

# Compliance Report on the Performance of Electric Cooperatives

**1st  
quarter  
2021**

---

**Office for Performance Assessment and Special Studies**

---

## Table of Contents

I.	Executive Summary .....	3
II.	Introduction .....	4
	A. Overview .....	4
	B. NEA Policy and Guidelines .....	4
	C. Key Performance Standards and Parameters .....	5
	D. Classification of Electric Cooperatives .....	6
III.	Compliance to Key Performance Standards and Parameters. ....	12
	A. Financial and Operational Standards and Parameters .....	12
	1. Cash General Fund .....	12
	2. Collection Efficiency .....	13
	3. Payment to Generating Companies, NGCP and other Financing Institutions .....	15
	4. Result of Financial Operation (Before RFSC) .....	18
	5. Net Worth .....	19
	B. Technical Standards and Parameters .....	20
	1. System Loss .....	20
	2. Power Reliability .....	22
	C. Institutional Standards and Parameters .....	24
IV.	Status of Rural Electrification Program .....	26
V.	Appendices .....	27
	A. Appendix A: Electric Cooperatives Performance Assessment Sheet.....	27
	B. Appendix B: System Reliability Indices .....	35
	C. Appendix C: Institutional Rating Compliance Table.....	39
	D. Appendix D: Energization Level Table .....	43
	E. Appendix E: Electric Cooperatives List .....	47

## I. Executive Summary

Electric Cooperatives (ECs) are assessed quarterly to measure their compliance to the established criteria on the status of financial, operational, technical, and institutional performance. ECs are also classified accordingly to determine the needed NEA's interventions to improve and upgrade their operations.

Assessment results for the first quarter of 2021 showed that 39 ECs were labeled as Green, 66 as Yellow-1, 9 as Yellow-2, and 7 as Red, summing up to 121 ECs evaluated. The particulars are enclosed in this report.

In relation to their financial and operational condition, 98 ECs were able to have at least one-month working capital. Additionally, 79 ECs met the 95% threshold in terms of collection efficiency with 17 ECs being 100% efficient. On their payment status to the generating companies, there were 103 ECs tagged as current and restructured- current, 98 are current on their payment of loans to NEA while 97 ECs were marked as current and restructured-current on their payment status to the National Grid Corporation of the Philippines. The last parameter for the financial and operational conditions showed that there were 86 ECs with a positive income and 112 ECs with positive net worth.

On the technical criteria, 95 ECs registered system loss level within the standard of 12% or below. Out of the 95 ECs, 62 were with single-digit system loss. The causes of high system loss were also determined, and the actions to resolve them were implemented. Aside from system loss, power reliability was also measured. Ninety-two (92) ECs were compliant to the System Average Interruption Frequency Index (SAIFI) standard while 93 ECs were within the System Average Interruption Duration Index (SAIDI) standard.

On the status of energization, 94 ECs recorded 91% and above level of electrification, of which, 75 ECs achieved 100% energization level.

Concerning the ECs' compliance on the institutional norms, 112 ECs were categorized as compliant that include 29 ECs having 100% compliance rating.

NEA's assistance and initiatives include preparation of Operation Improvement Plan (OIP), supervision of ECs under private sector participation, and intervention of NEA to ECs such as management take-over, round table assessment, and establishment of new policies and guidelines.

## II. Introduction

### Overview

The Compliance Report on the Performance of Electric Cooperatives is a quarterly summary of the EC classification. It focuses on the assessment of the ECs' performance on several aspects of operations, such as, financial, operational, technical, and institutional components. The objectives of this report are to evaluate the performance of ECs; to ensure early detection of adverse financial condition; to serve as triggers for NEA intervention in the EC operation; and to institute preventive, remedial, and mitigating measures prior to being categorized as ailing EC. Likewise Section 19 of the Implementing Rules and Regulations (IRR) of RA 10531 mandates NEA to submit quarterly compliance report to the Joint Congressional Energy Commission (JCEC) and to the Department of Energy (DOE).

This report was prepared to assess the ECs' performance during the **first quarter of 2021**. The cut-off date on the data contained in this report is September 30, 2021 which was approved by the NEA Board of Administrators on November 29, 2021 under Resolution No. 138 s-2021.

### NEA Policies and Guidelines

Republic Act No. 10531, Rule II, Section 5. Powers, Functions, and Privileges of NEA, states that in order to strengthen the ECs, NEA shall help them become economically viable and prepare them for the implementation of retail competition and open access pursuant to Sections 31 of the EPIRA.

Under Rule IV, Section 19, it is specified that NEA shall have the following obligations:

- a. To develop standards, and protocols for the efficient operation of the ECs;
- b. To develop financial and operational parameters to serve as triggers for intervention of the NEA;
- c. To evaluate and categorize ECs based on standards;
- d. To enforce performance standards and submit quarterly reports which shall include summary of compliances to key performance standards and recommendation for rehabilitation in case of ailing ECs;
- e. To protect the interest of the member-consumers and the public in general; and
- f. To create a NEA rehabilitation team to assist the ailing ECs improve its financial and technical conditions.

In compliance, the NEA formulated the Guidelines for the Classification of Electric Cooperatives and Provision for NEA Intervention which was approved by the NEA Board of Administrators in January 2014 and by the Department of Energy in December 2013.

After review of its adoption and implementation, the approved Guidelines for the Classification of ECs was enhanced in October 2020 to give provision for the assessment of performance parameter on System Reliability as well as their amortization payments to NEA and other financing Institutions. The Guidelines for the Declaration and Graduation of Ailing ECs were likewise adopted for scenarios where ECs were able to improve their performance and comply with the standards set forth by NEA.

The 2020 guidelines classified the ECs into the following:

- a. Green – ECs which are able to meet all the seven (7) performance standards and parameters;
- b. Yellow-1 – ECs which fail to comply with not more than three (3) key performance standards and parameters;
- c. Yellow-2 – ECs which fail to comply with four (4) or more of the key performance standards and parameters, and ECs which fall under the six (6) circumstances mentioned in Section 20 of the IRR but have not been declared as ailing ECs; and
- d. Red – ECs which have been declared as “ailing” after observance of due process.

Under RA 10531, Section 20. Ailing ECs, an EC may be declared as ailing when it falls to the following circumstances:

- a. Has negative net worth for the last three (3) years. For this purpose, “*Negative Net Worth*” shall mean as the financial condition of an EC in which its liabilities are greater than its assets;
- b. Has accumulated ninety (90) days arrearages in power supply purchases from generating companies and power suppliers/source of electricity, and the transmission charges by the Transco or its Concessionaire;
- c. Unable to provide electric service due to technical and/or financial inefficiencies, and/or institutional problems;
- d. Unable to efficiently perform its electric distribution utility obligations or continue in business due to organizational, external, and internal factors;
- e. When an EC has failed to meet other operational standards established by the NEA; and
- f. Unable to set up or continuously support its Wholesale Electricity Spot Market prudential requirements.

As part of due process, the EC may be afforded a recovery period of not more than one (1) year to undertake remedial and mitigating measures including a doable Operation Improvement Plan (OIP) to be submitted to the NEA for approval. If within a certain time, not exceeding one hundred and eighty (180) days from the implementation of the OIP, there is no sign of concrete and substantial improvement in the operational and/or financial condition of the EC, the OIP shall be set aside and become wholly inoperative and the EC shall be declared as ailing EC.

### **Key Performance Standards and Parameters**

There are seven established standards and parameters used in the assessment of the ECs’ financial and technical conditions (Table 1).

**Table 1.** Established Key Performance Standards and Parameters

Parameter		Standard
Cash General Fund		At least one month working capital
Collection Efficiency		95% and above
Payment to GENCO; NGCP; NEA and other Financial Institutions		Current/Restructured Current
Result of Financial Operation (Before RFSC)		Positive
Net Worth		Positive
System Loss		Within the Cap
System Reliability	System Average Interruption Frequency Index (SAIFI)	Within the standard set by Philippine Distribution Code: On-Grid – 25 interruptions per consumer per year Off-Grid – 30 interruptions per consumer per year
	System Average Interruption Duration Index (SAIDI)	On-Grid - 2,700 minutes Off-Grid - 3,375 minutes

### Classification of Electric Cooperatives

For the first quarter of 2021, there were 39 ECs classified as Green, 66 ECs as Yellow-1, 9 ECs as Yellow-2, and 7 ECs tagged as Red (Tables 2-5).

**Table 2.** 2021 Q1 Green Electric Cooperatives

39 GREEN ELECTRIC COOPERATIVES			
ISECO	QUEZELCO II	CEBECO I	MOELCI I
LUELCO	TIELCO	CEBECO II	BUSECO
PANELCO III	CASURECO IV	PROSIELCO	SOCOTECO I
BENECO	CAPELCO	BOHECO I	ANECO
TARELCO II	ILECO I	DORELCO	SURNECO
NEECO I	ILECO II	LEYECO II	SIARELCO
NEECO II - AREA 1	ILECO III	LEYECO IV	DIELCO
PRESCO	GUIMELCO	SOLECO	SURSECO I
ZAMECO I	NORECO I	NORSAMELCO	SURSECO II
BATELEC II	BANELCO	SAMELCO I	

**Table 3.** 2021 Q1 Yellow-1n Electric Cooperatives

66 YELLOW-1 ELECTRIC COOPERATIVES				
INEC	SAJELCO	BISELCO	NORECO II	CAMELCO
PANELCO I	PELCO I	PALECO	CEBECO III	LANECO
CAGELCO I	PELCO II	CANORECO	CELCO	DORECO
CAGELCO II	PELCO III	CASURECO I	BOHECO II	DASURECO
ISELCO I	PENELCO	CASURECO II	LEYECO III	COTELCO
ISELCO II	ZAMECO II	SORECO I	LEYECO V	COTELCO-PPALMA
NUVELCO	FLECO	SORECO II	BILECO	SOCOTECO II
QUIRELCO	BATELEC I	FICELCO	SAMELCO II	SUKELCO
IFELCO	QUEZELCO I	TISELCO	ESAMELCO	MAGELCO
KAELCO	LUBELCO	AKELCO	ZANECO	ASELCO
MOPRECO	OMECO	ANTECO	ZAMSURECO I	
AURELCO	ORMECO	NONECO	MOELCI II	
TARELCO I	MARELCO	CENECO	MORESCO I	
NEECO II - AREA 2	ROMELCO	NOCECO	MORESCO II	

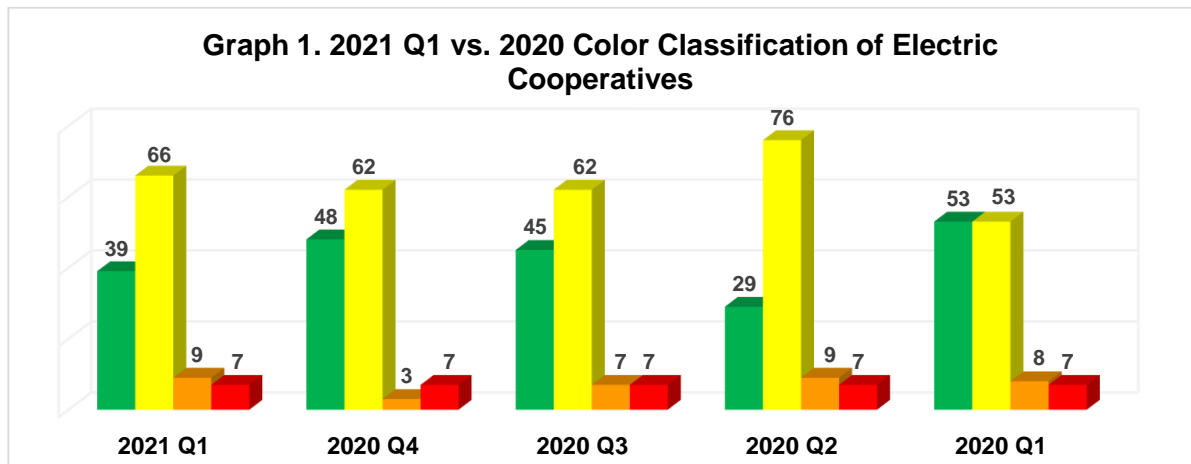
**Table 4.** 2021 Q1 Yellow-2 Electric Cooperatives

9 Yellow -2 Electric Cooperatives			
CENPELCO	ZAMSURECO II	FIBECO	SIASELCO
BATANELCO	ZAMCELCO	DANECO	CASELCO
CASURECO III			

**Table 5.** 2021 Q1 Red Electric Cooperatives

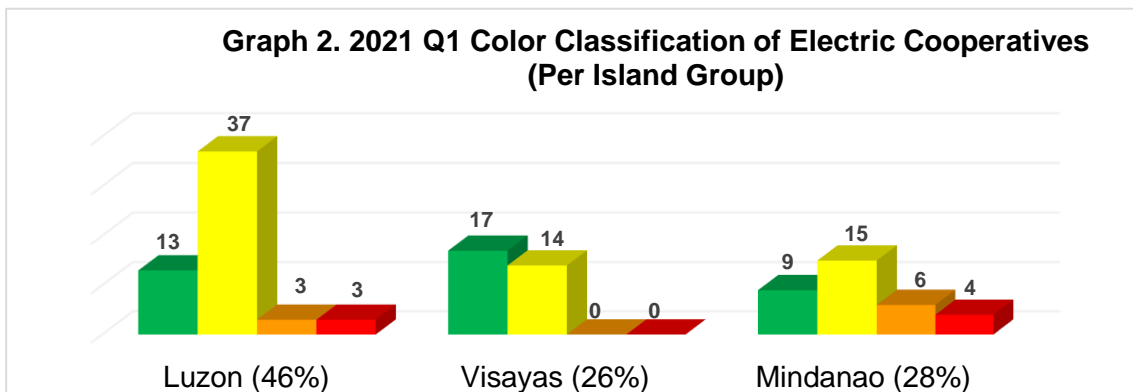
7 Red Electric Cooperatives			
ABRECO	MASELCO	SULECO	LASURECO
ALECO	TAWELCO	BASELCO	

The number of Green ECs continues to vary for the last few quarters while Red ECs remained the same (Graph 1).



As of cut-of-date, CASELCO was the only cooperative who failed to submit all the documentary requirements.

Among the three island groups, Luzon, Visayas, and Mindanao, ECs under Visayas performed significantly well as all their ECs were classified as either Green or Yellow-1 (Graph 2).



**Table 6.** 2021 Q1 vs. 2020 Color Classification of Electric Cooperatives (Per Region)

<b>Electric Cooperatives</b>	<b>2021 Q1</b>	<b>2020 Q4</b>	<b>2020 Q3</b>	<b>2020 Q2</b>	<b>2020 Q1</b>
<b>Region I</b>					
INEC	Green	Yellow-1	Yellow-1	Yellow-1	Yellow-1
ISECO	Yellow-1	Green	Green	Green	Green
LUELCO	Green	Yellow-1	Yellow-1	Yellow-1	Yellow-1
PANELCO I	Yellow-1	Yellow-1	Yellow-1	Yellow-1	Yellow-1
CENPELCO	Yellow-2	Yellow-1	Yellow-1	Yellow-1	Yellow-1
PANELCO III	Green	Yellow-1	Yellow-1	Yellow-1	Yellow-1
<b>Region II</b>					
BATANELCO	Yellow-2	Green	Yellow-1	Yellow-1	Yellow-1
CAGELCO I	Yellow-1	Green	Green	Green	Green
CAGELCO II	Yellow-1	Green	Green	Green	Green
ISELCO I	Yellow-1	Yellow-1	Green	Yellow-1	Yellow-1
ISELCO II	Yellow-1	Yellow-1	Yellow-1	Yellow-1	Yellow-2
NUVELCO	Yellow-1	Yellow-1	Yellow-1	Yellow-1	Yellow-1
QUIRELCO	Yellow-1	Yellow-1	Yellow-1	Yellow-1	Yellow-1
<b>CAR</b>					
ABRECO	Red	Red	Red	Red	Red
BENECO	Green	Yellow-1	Yellow-1	Yellow-1	Green
IFELCO	Yellow-1	Yellow-2	Yellow-2	Yellow-2	Yellow-2
KAELCO	Yellow-1	Yellow-1	Yellow-1	Yellow-1	Yellow-1
MOPRECO	Yellow-1	Green	Green	Yellow-1	Yellow-1
<b>Region III</b>					
AURELCO	Yellow-1	Yellow-1	Yellow-1	Yellow-1	Yellow-1
TARELCO I	Yellow-1	Yellow-1	Yellow-1	Yellow-1	Green
TARELCO II	Green	Yellow-1	Yellow-1	Yellow-1	Green
NEECO I	Green	Green	Yellow-1	Yellow-1	Green
NEECO II – AREA 1	Green	Green	Green	Green	Yellow-1
NEECO II – AREA 2	Yellow-1	Yellow-1	Yellow-1	Yellow-1	Yellow-1
SAJELCO	Yellow-1	Green	Yellow-1	Yellow-1	Green
PRESCO	Green	Green	Green	Yellow-1	Green
PELCO I	Yellow-1	Green	Green	Yellow-1	Green
PELCO II	Yellow-1	Yellow-1	Yellow-1	Yellow-1	Yellow-1
PELCO III	Yellow-1	Yellow-1	Yellow-1	Yellow-1	Yellow-1
PENELCO	Yellow-1	Yellow-1	Yellow-1	Yellow-1	Green
ZAMECO I	Green	Green	Green	Yellow-1	Green
ZAMECO II	Yellow-1	Yellow-1	Yellow-1	Yellow-1	Green



**Table 6.** (Continued)

<b>Electric Cooperatives</b>	<b>2021 Q1</b>	<b>2020 Q4</b>	<b>2020 Q3</b>	<b>2020 Q2</b>	<b>2020 Q1</b>
<b>Region IV-A</b>					
FLECO	Yellow-1	Yellow-1	Yellow-1	Yellow-1	Yellow-1
BATELEC I	Yellow-1	Yellow-1	Yellow-1	Yellow-1	Yellow-1
BATELEC II	Green	Green	Yellow-1	Yellow-1	Yellow-1
QUEZELCO I	Yellow-1	Yellow-1	Yellow-1	Yellow-1	Yellow-1
QUEZELCO II	Green	Green	Yellow-1	Green	Green
<b>Region IV-B</b>					
LUBELCO	Yellow-1	Yellow-1	Green	Green	Green
OMECO	Yellow-1	Yellow-1	Yellow-1	Yellow-1	Green
ORMECO	Yellow-1	Yellow-1	Yellow-1	Yellow-1	Green
MARELCO	Yellow-1	Yellow-1	Yellow-1	Yellow-1	Yellow-1
TIELCO	Green	Green	Green	Green	Green
ROMELCO	Yellow-1	Yellow-1	Green	Green	Green
BISELCO	Yellow-1	Green	Green	Green	Green
PALECO	Yellow-1	Yellow-1	Yellow-1	Yellow-1	Yellow-1
<b>Region V</b>					
CANORECO	Yellow-1	Yellow-1	Yellow-1	Yellow-1	Green
CASURECO I	Yellow-1	Green	Green	Green	Yellow-1
CASURECO II	Yellow-1	Green	Green	Green	Yellow-1
CASURECO III	Yellow-2	Yellow-1	Yellow-1	Yellow-1	Yellow-2
CASURECO IV	Green	Green	Green	Green	Green
ALECO	Red	Red	Red	Red	Red
SORECO I	Yellow-1	Yellow-1	Yellow-1	Yellow-1	Yellow-1
SORECO II	Yellow-1	Yellow-1	Yellow-1	Yellow-1	Yellow-1
FICELCO	Yellow-1	Green	Green	Green	Yellow-1
MASELCO	Red	Red	Red	Red	Red
TISELCO	Yellow-1	Yellow-1	Yellow-1	Yellow-1	Yellow-1
<b>Region VI</b>					
AKELCO	Yellow-1	Yellow-1	Yellow-1	Yellow-1	Yellow-1
ANTECO	Yellow-1	Yellow-1	Yellow-1	Yellow-1	Yellow-1
CAPELCO	Green	Green	Green	Yellow-1	Green
ILECO I	Green	Green	Yellow-1	Yellow-1	Green
ILECO II	Green	Yellow-1	Yellow-1	Yellow-1	Green
ILECO III	Green	Green	Green	Green	Green
GUIMELCO	Green	Green	Yellow-1	Yellow-1	Green
NONECO	Yellow-1	Yellow-1	Green	Green	Green
CENECO	Yellow-1	Yellow-1	Yellow-1	Yellow-1	Yellow-1
NOCECO	Yellow-1	Green	Green	Green	Yellow-1

**Table 6.** (Continued)

<b>Electric Cooperatives</b>	<b>2021 Q1</b>	<b>2020 Q4</b>	<b>2020 Q3</b>	<b>2020 Q2</b>	<b>2020 Q1</b>
<b>Region VII</b>					
NORECO I	Green	Green	Green	Green	Green
NORECO II	Yellow-1	Yellow-1	Yellow-1	Yellow-1	Yellow-1
BANELCO	Green	Yellow-1	Green	Green	Green
CEBECO I	Green	Green	Green	Green	Green
CEBECO II	Green	Green	Green	Green	Green
CEBECO III	Yellow-1	Green	Green	Green	Green
PROSIELCO	Green	Green	Green	Green	Green
CELCO	Yellow-1	Yellow-1	Yellow-1	Green	Green
BOHECO I	Green	Green	Green	Green	Green
BOHECO II	Yellow-1	Green	Green	Green	Green
<b>Region VIII</b>					
DORELCO	Green	Green	Green	Green	Green
LEYECO II	Green	Green	Green	Green	Green
LEYECO III	Yellow-1	Yellow-1	Yellow-1	Yellow-1	Yellow-1
LEYECO IV	Green	Green	Green	Green	Green
LEYECO V	Yellow-1	Yellow-1	Yellow-1	Yellow-1	Yellow-1
SOLECO	Green	Green	Yellow-1	Yellow-1	Yellow-1
BILECO	Yellow-1	Yellow-1	Yellow-1	Yellow-1	Green
NORSAMELCO	Green	Green	Green	Green	Green
SAMELCO I	Green	Green	Green	Green	Green
SAMELCO II	Yellow-1	Green	Yellow-1	Yellow-1	Yellow-1
ESAMELCO	Yellow-1	Green	Green	Green	Green
<b>Region IX</b>					
ZANECO	Yellow-1	Yellow-1	Yellow-1	Yellow-1	Yellow-1
ZAMSURECO I	Yellow-1	Green	Green	Green	Green
ZAMSURECO II	Yellow-2	Yellow-2	Yellow-2	Yellow-2	Yellow-2
ZAMCELCO	Yellow-2	Yellow-2	Yellow-2	Yellow-2	Yellow-2
<b>Region X</b>					
MOELCI I	Green	Yellow-1	Green	Yellow-1	Yellow-1
MOELCI II	Yellow-1	Yellow-1	Yellow-1	Yellow-1	Yellow-1
MORESCO I	Yellow-1	Green	Green	Yellow-1	Yellow-1
MORESCO II	Yellow-1	Yellow-1	Yellow-1	Yellow-1	Green
FIBECO	Yellow-2	Yellow-1	Yellow-2	Yellow-1	Yellow-1
BUSECO	Green	Green	Green	Yellow-1	Green
CAMELCO	Yellow-1	Yellow-1	Yellow-1	Yellow-1	Yellow-1
LANECO	Yellow-1	Yellow-1	Yellow-1	Yellow-1	Yellow-1

**Table 6.** (Continued)

<b>Electric Cooperatives</b>	<b>2021 Q1</b>	<b>2020 Q4</b>	<b>2020 Q3</b>	<b>2020 Q2</b>	<b>2020 Q1</b>
<b>Region XI</b>					
DORECO	Yellow-1	Yellow-1	Yellow-1	Yellow-1	Yellow-1
DANECO	Yellow-2	Yellow-1	Yellow-1	Yellow-2	Yellow-2
DASURECO	Yellow-1	Yellow-1	Yellow-1	Yellow-1	Green
<b>Region XII</b>					
COTELCO	Yellow-1	Yellow-1	Yellow-1	Yellow-1	Yellow-1
COTELCO-PPALMA	Yellow-1	Yellow-1	Yellow-1	Yellow-1	Yellow-1
SOCOTECO I	Yellow-1	Yellow-1	Yellow-1	Yellow-1	Yellow-1
SOCOTECO II	Yellow-1	Yellow-1	Yellow-1	Yellow-1	Yellow-1
SUKELCO	Yellow-1	Yellow-1	Yellow-1	Yellow-1	Yellow-1
<b>ARMM</b>					
TAWELCO	Red	Red	Red	Red	Red
SIASELCO	Yellow-1	Yellow-1	Yellow-2	Yellow-2	Yellow-1
SULECO	Red	Red	Red	Red	Red
BASELCO	Red	Red	Red	Red	Red
CASELCO	Yellow-2	Yellow-2	Yellow-2	Yellow-2	Yellow-2
LASURECO	Red	Red	Red	Red	Red
MAGELCO	Yellow-2	Yellow-1	Yellow-1	Yellow-2	Yellow-2
<b>Region XIII</b>					
ANECO	Green	Green	Green	Yellow-1	Green
ASELCO	Yellow-1	Yellow-1	Green	Yellow-1	Yellow-1
SURNECO	Yellow-1	Green	Green	Yellow-1	Yellow-1
SIARELCO	Green	Green	Green	Green	Green
DIELCO	Green	Green	Green	Green	Green
SURSECO I	Green	Green	Green	Green	Green
SURSECO II	Green	Green	Green	Green	Green

Sorted by region, comparative analysis of the classification of ECs are also presented (Table 6).

### III. Compliance to Key Performance Standards and Parameters

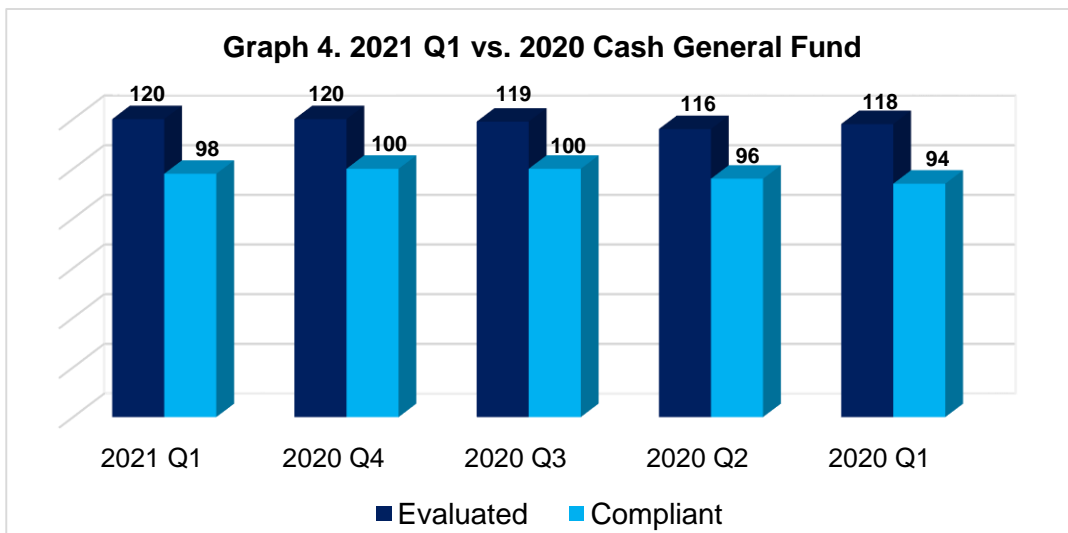
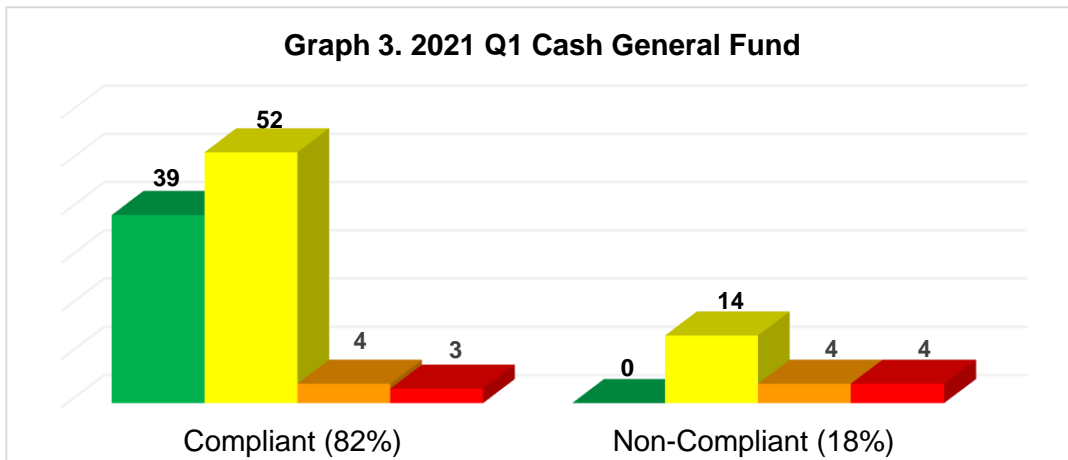
#### A. Financial and Operational Standards and Parameters

There are five financial and operational standards and parameters used in the classification of ECs. The performance of the ECs is presented in comparison with their performance from the previous year. ECs with incomplete submission or no submission were not evaluated. For specifics, go to Appendix A.

##### Cash General Fund

This parameter measures the ability of an EC to continue their daily operation for a span of one month. An EC is considered compliant by maintaining a higher working capital fund against the one-month working capital requirement.

Among the 121 ECs, there were 120 ECs evaluated with only 98 ECs being compliant (Graph 3).

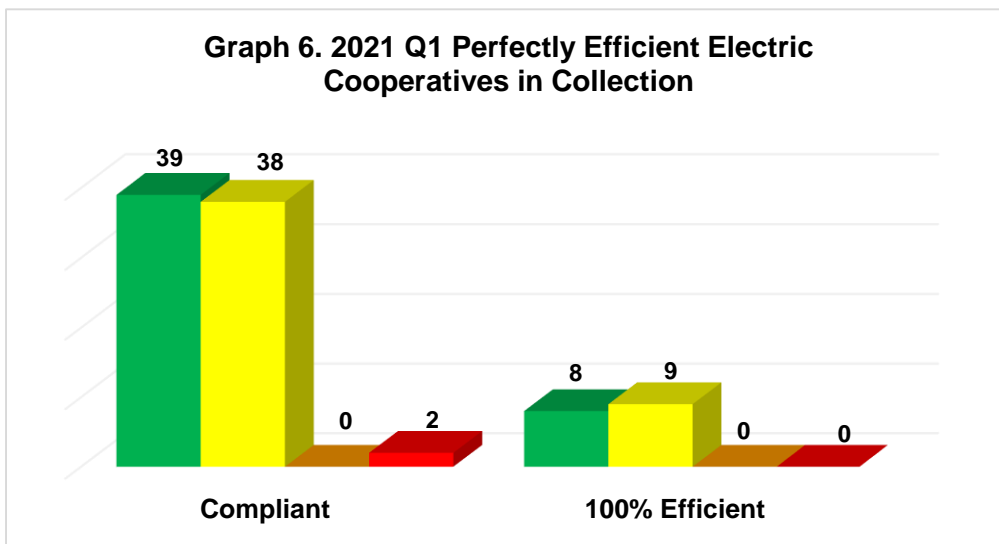
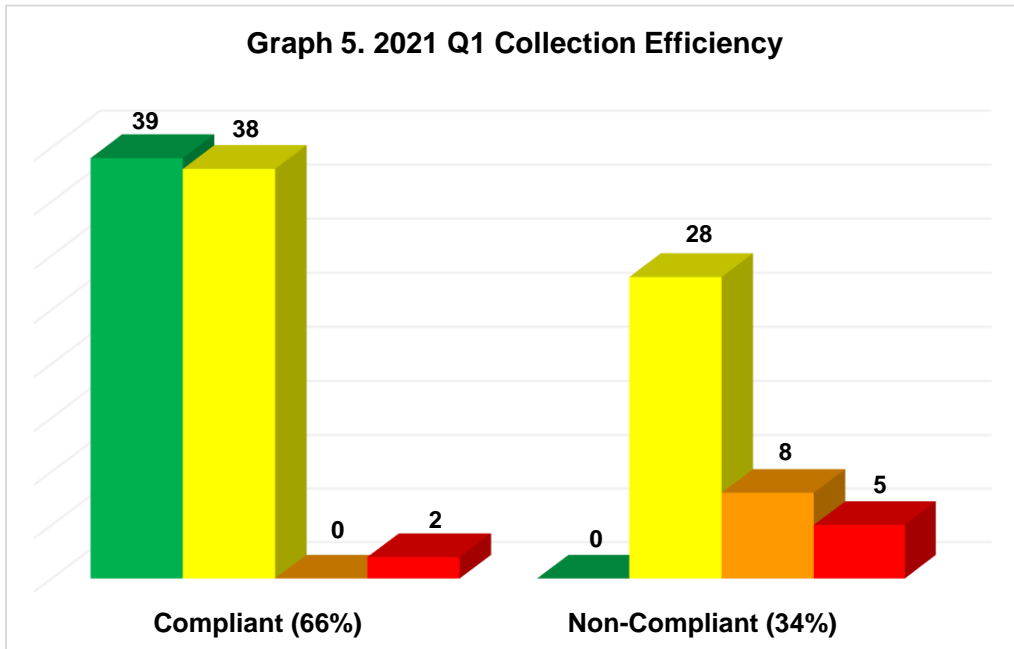


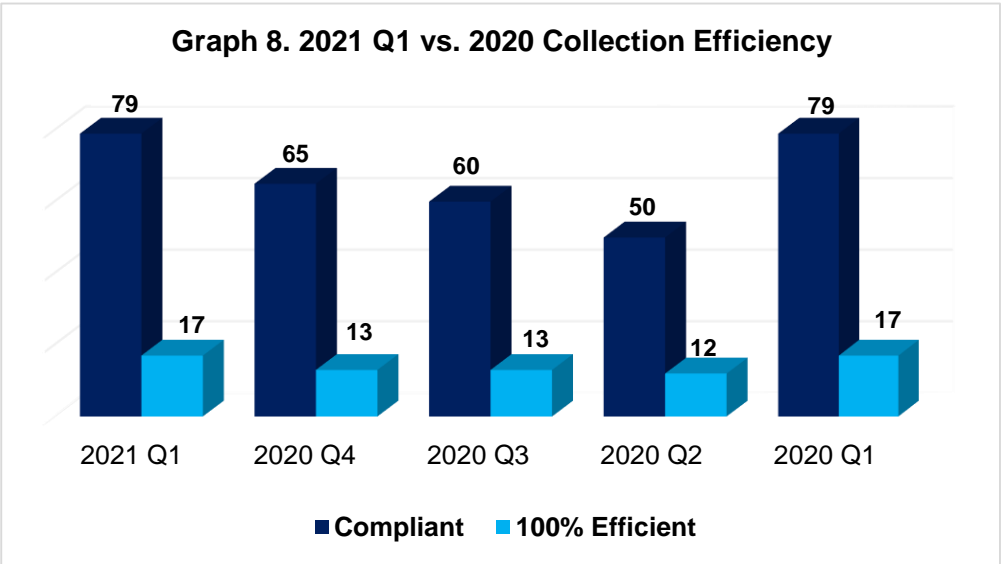
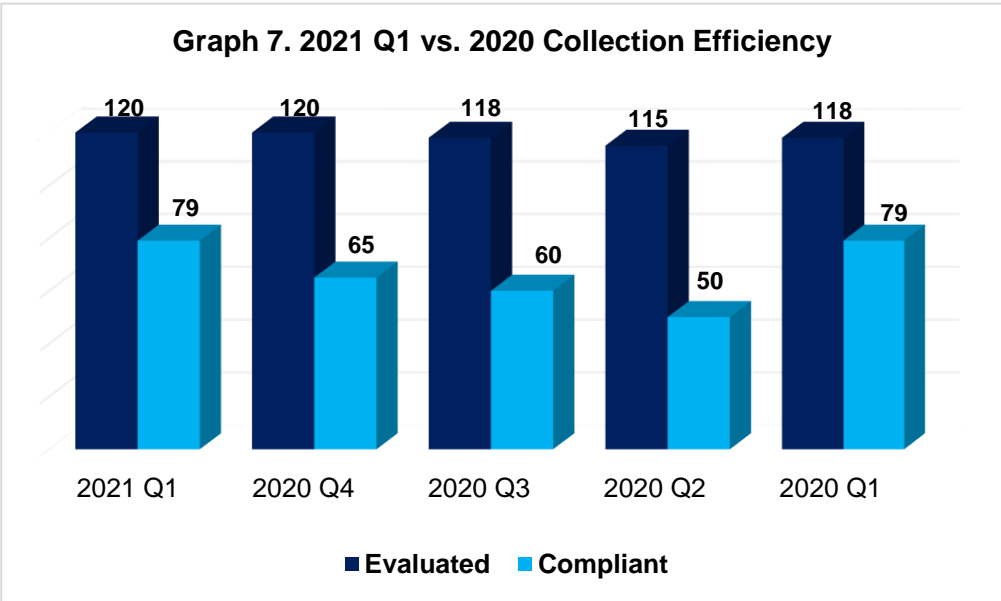
Comparing this quarter's performance from last year's results, more ECs are being evaluated on their financial state based on the ECs ability to operate continuously while maintaining their compliance status (Graph 4).

**Collection Efficiency**

An EC's collection efficiency refers to its capability to collect its corresponding consumer accounts receivables. The standard level is 95%.

Of the 121 ECs, 120 ECs were assessed and the result was 79 ECs were able to collect at least 95% of its consumer accounts receivables (Graph 5).



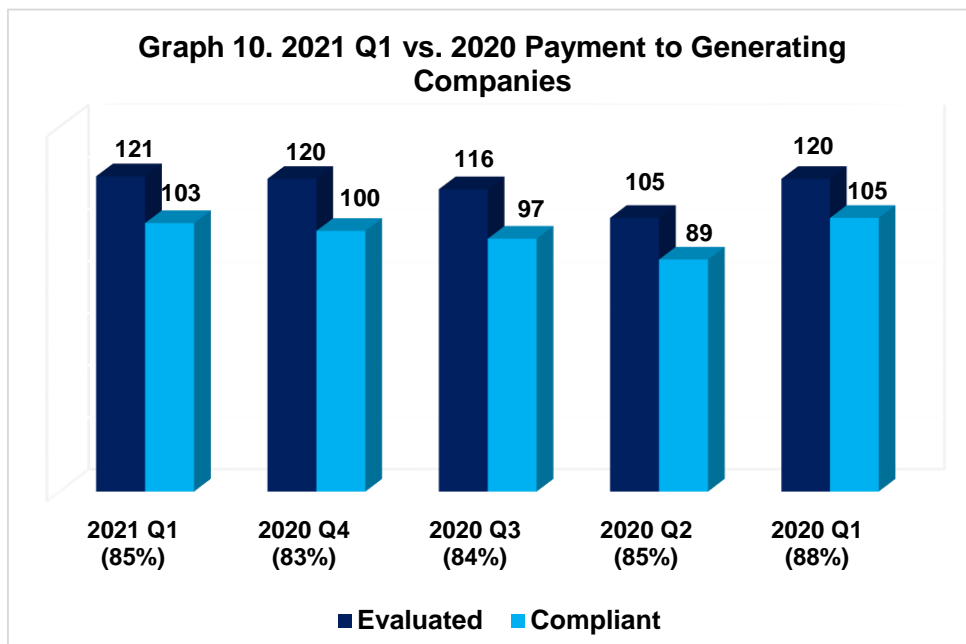
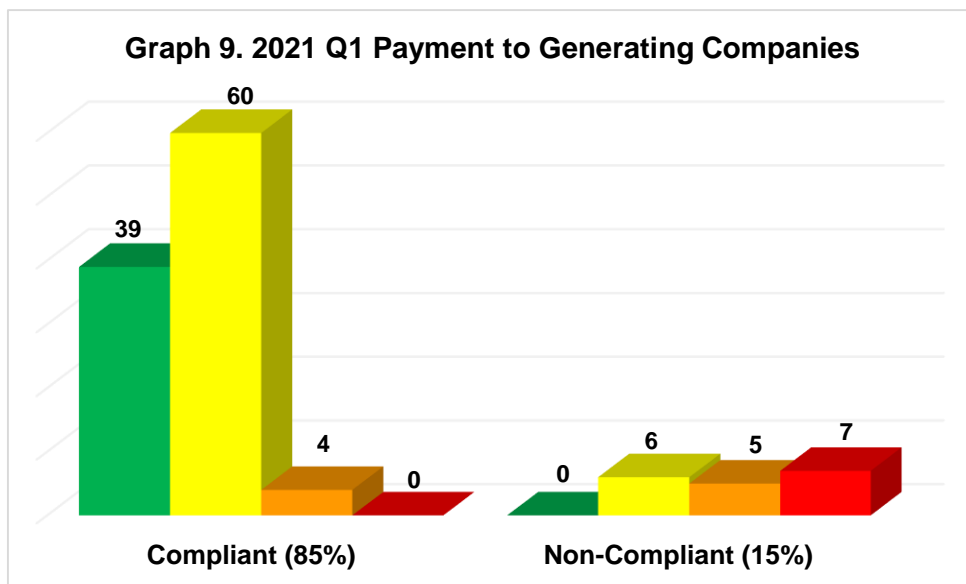


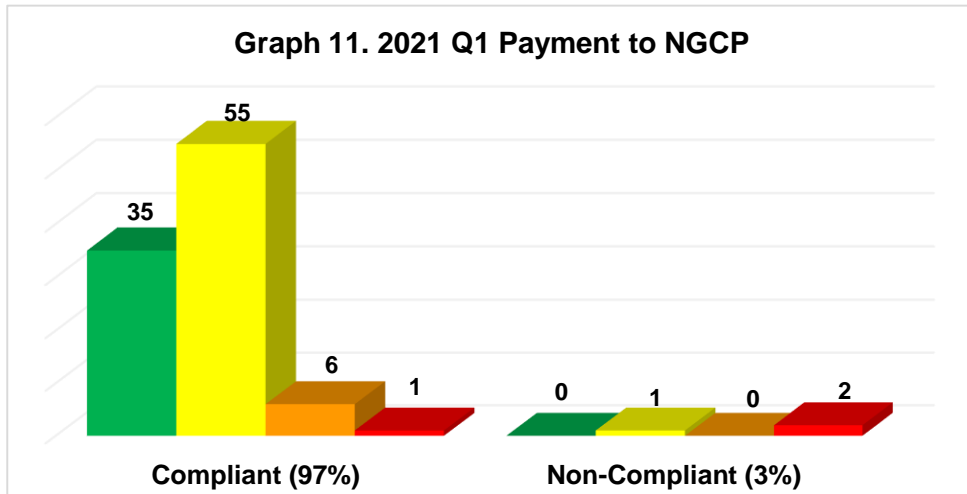
Compared to the previous year’s results, only 66% are compliant for this quarter (Graph 5). Out of the 79 compliant ECs, 17 were 100% efficient. (Graph 6). The number of compliant ECs in collection slightly increased for this quarter compared with last year’s quarterly assessment (Graph 7). The slight increase in collection performance of the ECs can be attributed to the relaxation of restrictions imposed by the government in its fight against COVID-19. Likewise, provisions for grace period on power bills have been lifted with the transition of the community quarantine to its lowest level for the first quarter of 2021, which enabled the ECs to resume regular collection activities in their franchise area. There was also an increase in the number of ECs who were 100% efficient in their collection efforts as compared to previous year’s performance (Graph 8).

## Payment to Generating Companies and NGCP

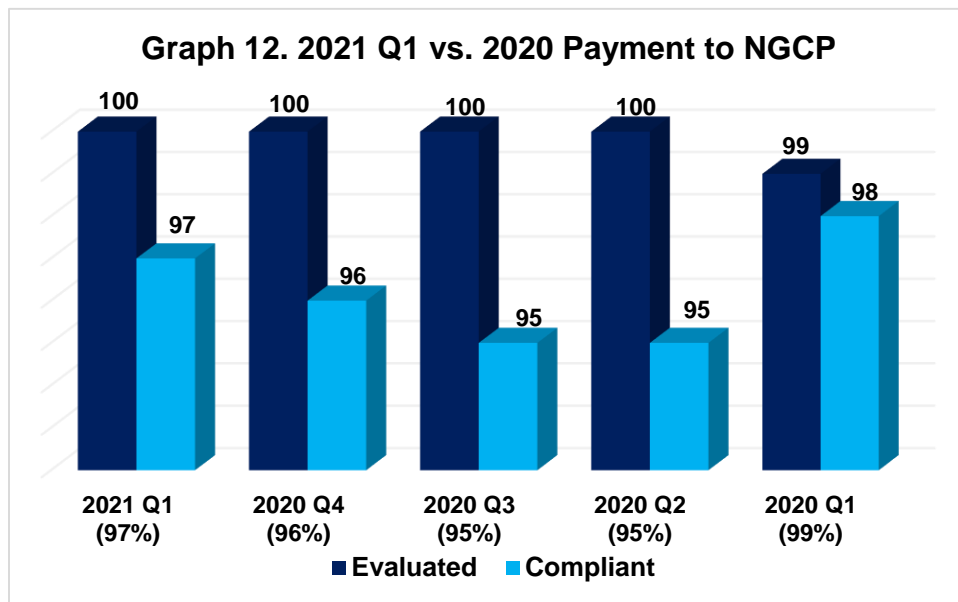
This condition denotes that an EC is compliant if it is able to pay its power accounts to generating companies (GENCO), and its transmission bills to National Grid Corporation of the Philippines (NGCP). A status of “Current” or “Restructured- Current” indicates the capacity of an EC to pay its fees on time. On the other hand, “Arrears” or “Restructured Arrears” shows the inability of an EC to pay its dues regularly.

All 121 ECs were evaluated for their payment to generating companies. Out of the 121, 103 ECs were with “Current” or “Restructured - Current” status, marking them as compliant (Graph 9). The payment to generating companies are kept within 80-90%, the lowest of which was during the fourth quarter of last year with only 83% efficiency (Graph 10).

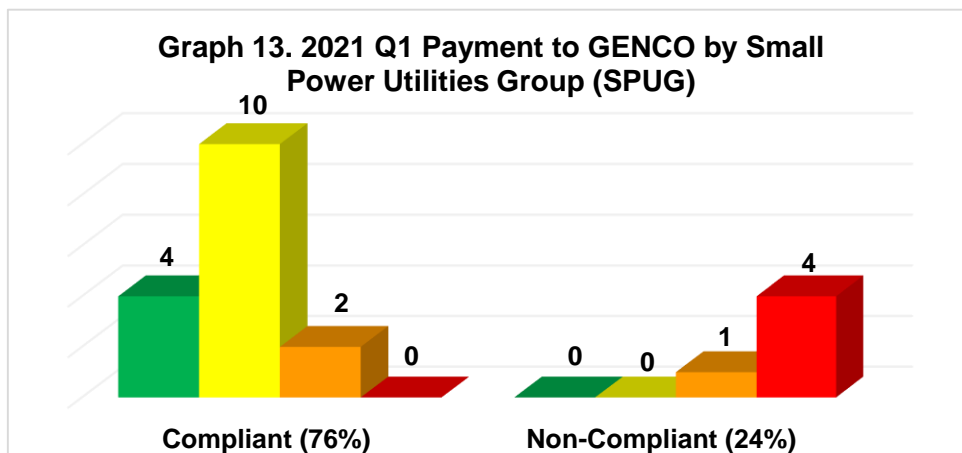




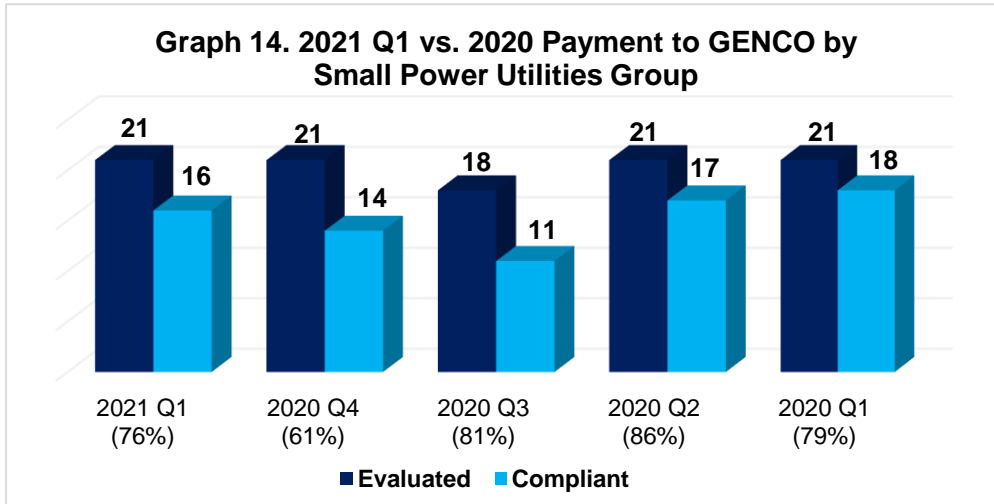
\*Excludes 21 SPUG ECs



As regards their payment to NGCP, there were 97 ECs marked as compliant (Graph 11) for the first quarter of this year. It was observed that ECs were more compliant with their payment to NGCP as the level was 97% compared to 85% of their payment to generating companies (Graph 10 and 12).





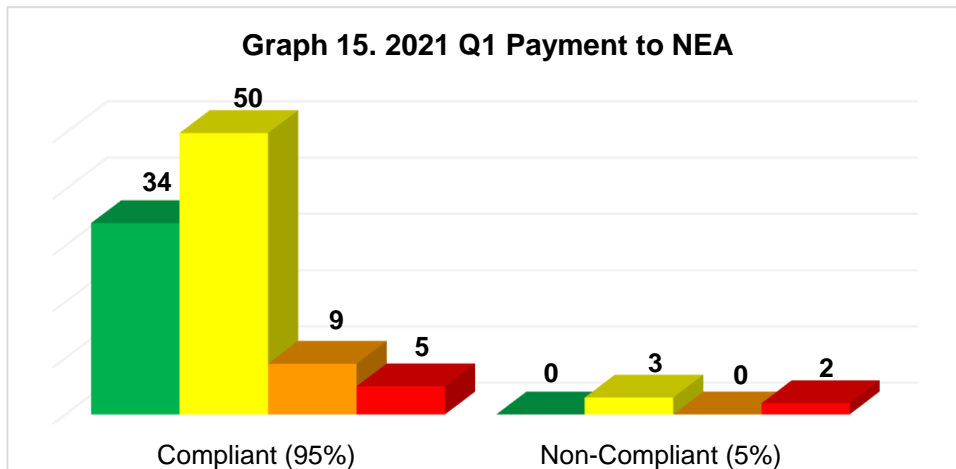


Among the 121 ECs, twenty-one (21) are labeled as Small Power Utilities Group (SPUG) and are only evaluated based on their payment to GENCO. Among these 21 SPUG ECs, 21 were evaluated and 16 or 76% are assessed as compliant (Graph 13). The number of compliant SPUG ECs increased from 14 to 16 comparing the 4<sup>th</sup> quarter of 2020 to first quarter of 2021 (Graph 14).

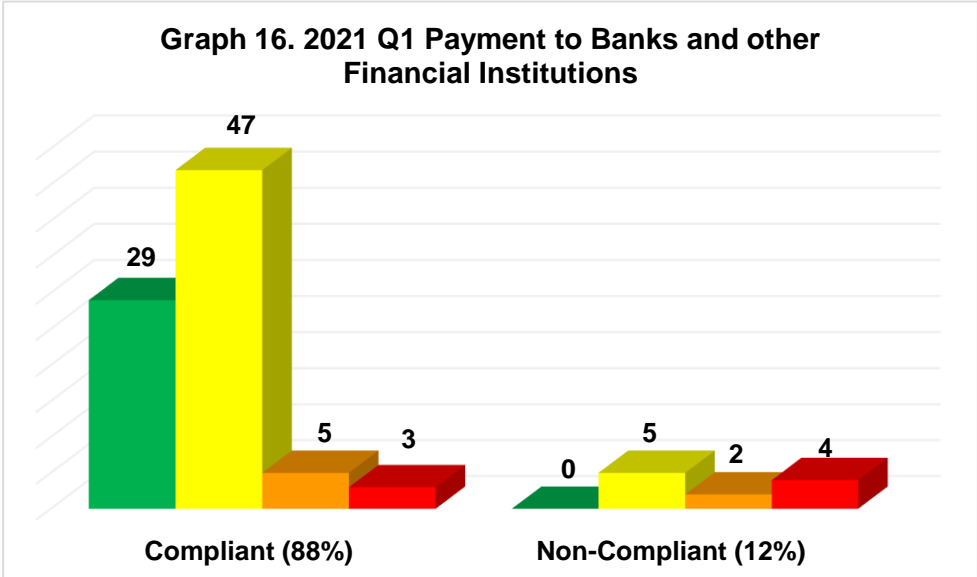
#### **Payment to Financial Institutions (NEA, Banks and other FIs)**

This parameter was included in the 2020 Policy for the Classification of ECs to monitor and measure compliance of ECs on their payment of financial obligations to NEA, Banks and other Financial Institutions (FIs). ECs are marked as “Current” or “Restructured- Current” if they are able to pay their amortizations on time. Contrastively, “Arrears” or “Restructured Arrears” shows the inability of an EC to pay its obligations promptly.

Of the 121 ECs, 103 ECs were assessed on their payment to NEA and the result was 98 ECs were current on their payments while 5 ECs were in arrears or they were not able to pay their obligations on time (Graph 15). 18 ECs were identified to have no financial obligations with NEA.

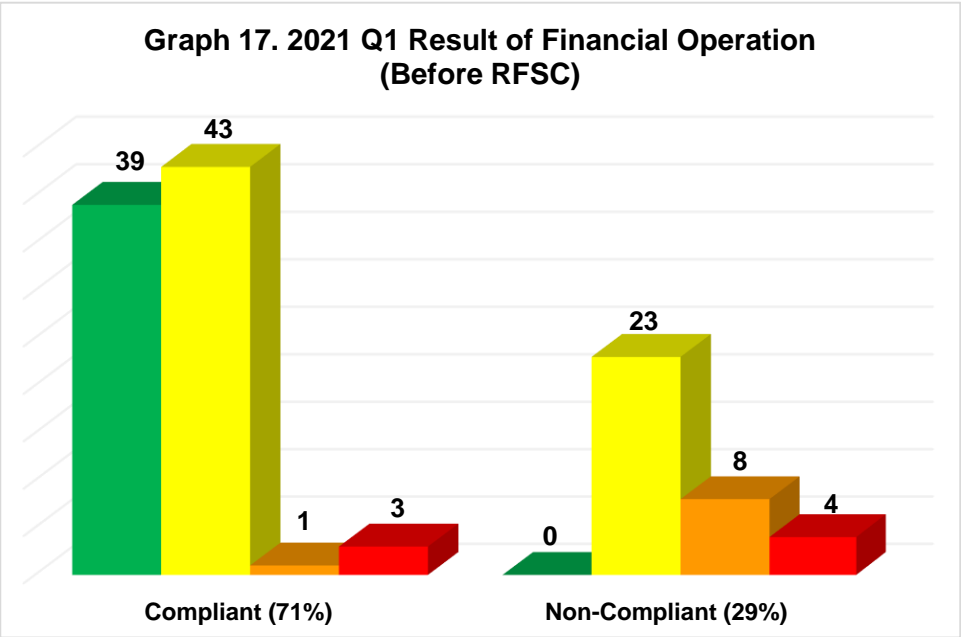


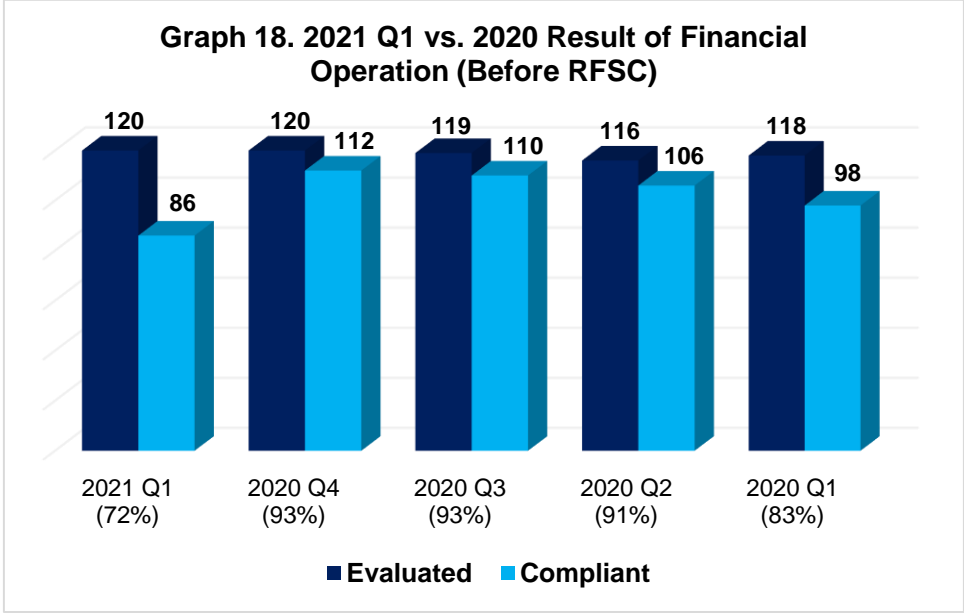
On payment to Banks and other Financial Institutions, out of 121 ECs, 95 ECs were assessed and the result showed that 84 ECs were current while 11 were in arrears with their obligations (Graph 16). 26 ECs were identified to have no loans with banks and other FIs for the first quarter of 2021.



**Result of Financial Operation (Before RFSC)**

This parameter states the total revenue left after deducting all costs and expenses. A positive financial status makes an EC compliant after assessment of performance.

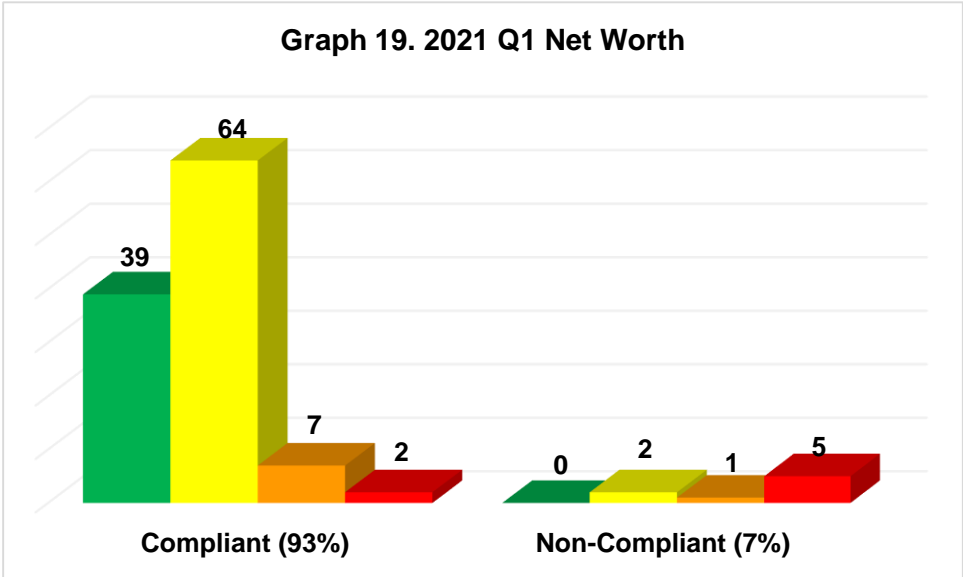


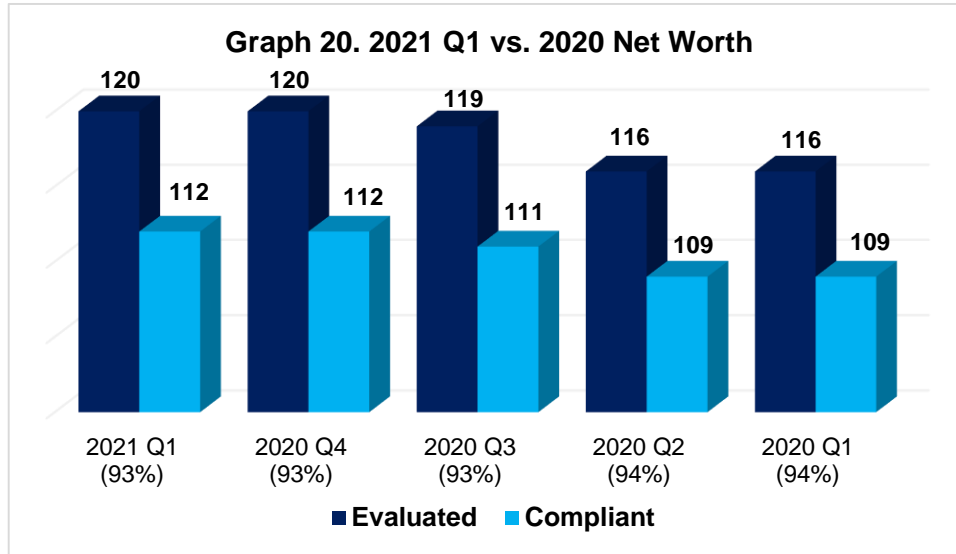


Out of the 120 evaluated ECs, 86 or 71% were compliant, most of which were Green and Yellow-1 ECs (Graph 17). It is observed that ECs were less compliant every first quarter of the year compared to other quarters (Graph 18).

**Net Worth**

An EC’s net worth presents its overall financial state. It refers to the total value of assets after total liabilities. A compliant EC has positive net worth, the condition that assets outweighs the liabilities.





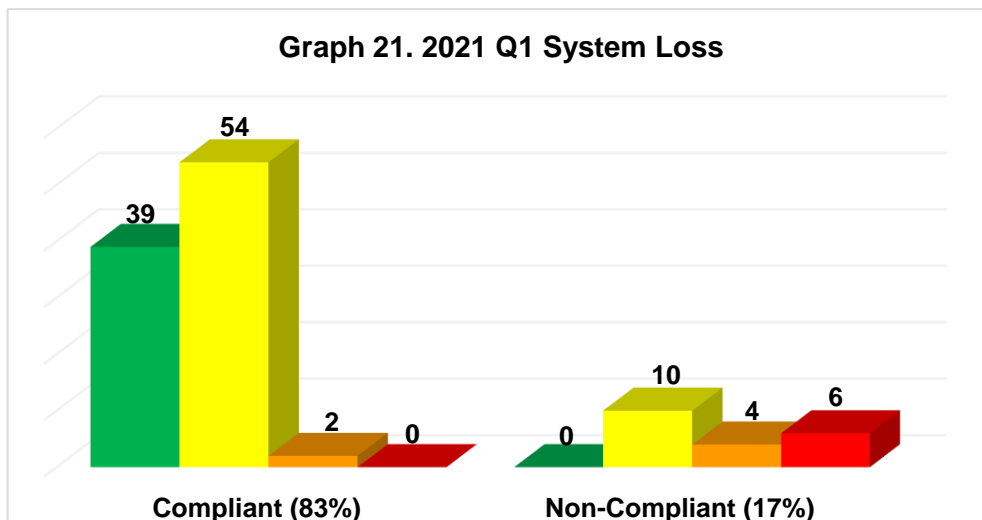
For the ECs’ net worth, 112 or 93% out of 120 ECs have a positive net worth for this year’s first quarter financial operations (Graph 19). There is no movement on the number of ECs and compliant ECs as compared to the fourth quarter of last year, but with a slight increase as compared to the same quarter last year (Graph 20).

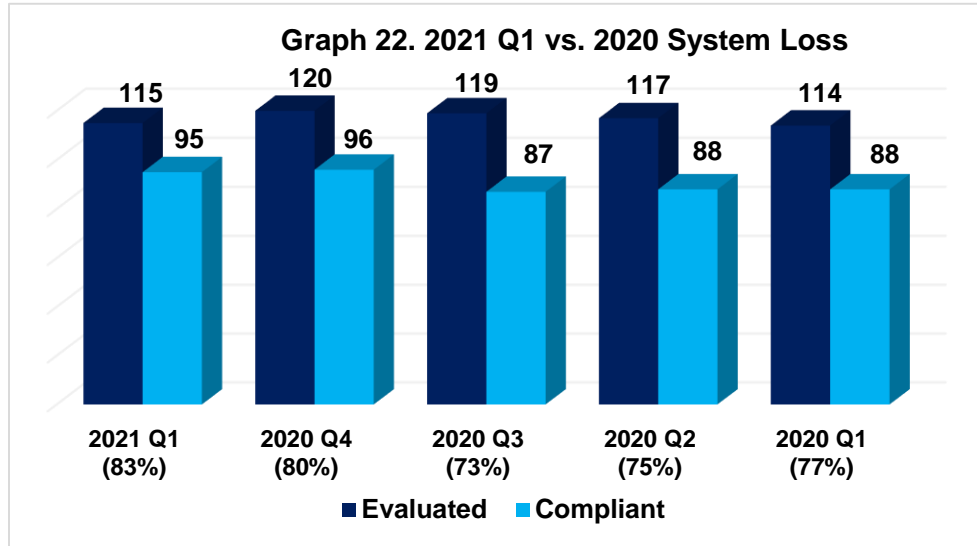
**B. Technical Standards and Parameters**

For the technical standards and parameters, two conditions are being considered, system efficiency and power reliability. For classifying ECs based on efficiency, only system loss is being utilized and for power reliability, the System Average Interruption Frequency Index (SAIFI) and System Average Interruption Distribution Index (SAIDI). The performance of the ECs is presented in comparison to their performance from the previous year. ECs with incomplete submission or no submission were not evaluated. For system loss percentages, refer to Appendix A and for power reliability values, refer to Appendix B.

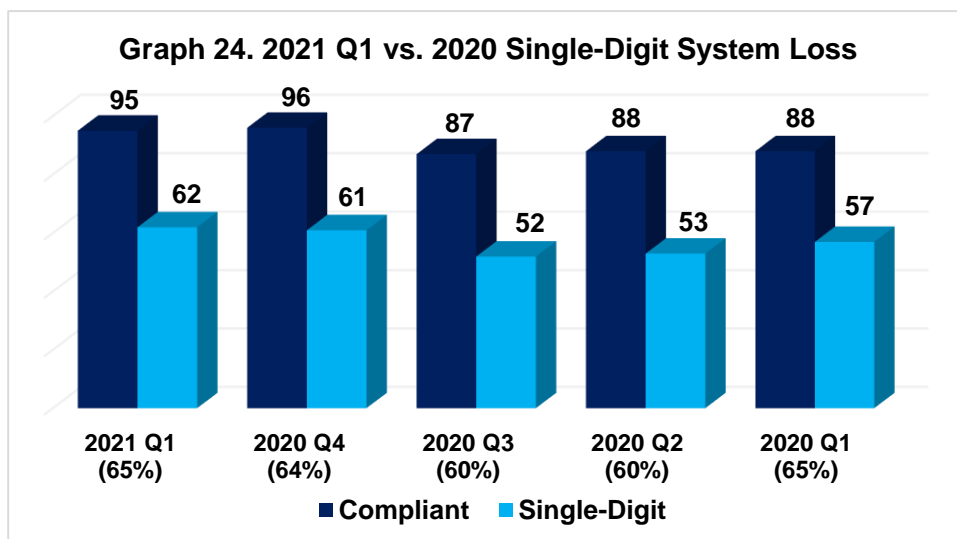
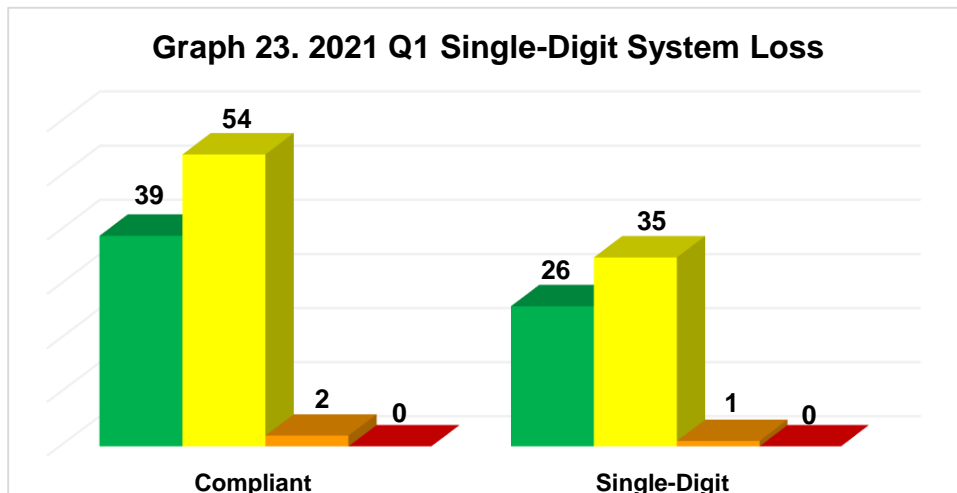
**System Loss**

This parameter measures the difference between energy input and energy output. It indicates the efficiency of the ECs’ distribution system. The standard used for 2021 is 12%.





Out of the 115 evaluated ECs, 95 ECs or 83% were compliant (Graph 21). The number of evaluated ECs decreased to 115 from 120 in the 4<sup>th</sup> quarter of 2020 as well as the compliant ECs from 96 in the 4<sup>th</sup> quarter of 2020 to 95 in the 1<sup>st</sup> quarter of 2021. There was, however, an increase in the evaluated and compliant ECs as compared to the same quarter last year. (Graph 22).



As more ECs meet the standards in system loss, others continue to improve their system to reduce the loss up to a single-digit level (Graph 23). The continuous decline of performance from the first quarter of 2020 was averted until the fourth quarter 2020 and continued to increase until the 1<sup>st</sup> quarter of 2021. It can also be noted that an 9% increase in performance is realized from the same quarter last year (Graph 24).

While the number of compliant ECs in the system loss parameter continued to increase, high system loss continues to be a concern. Some of the causes include:

- a. Pilferages;
- b. Defective meters;
- c. Overloaded system;
- d. Erratic billing cycles;
- e. Delayed implementation of Capital Expenditures project due to regulatory requirements; and
- f. Other concerns such as right of way and old, dilapidated distribution system

To improve the system loss level, the ECs undertake the following programs:

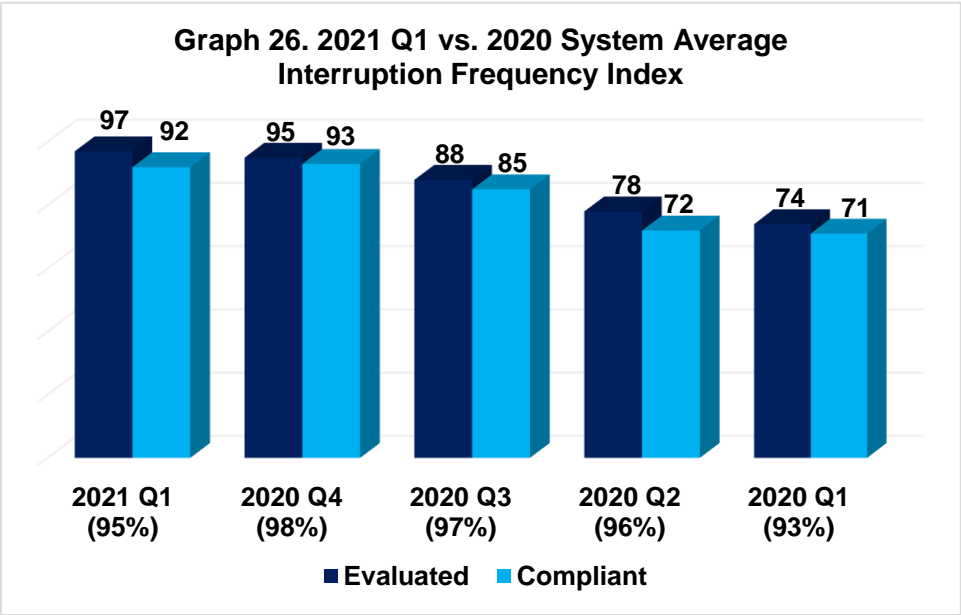
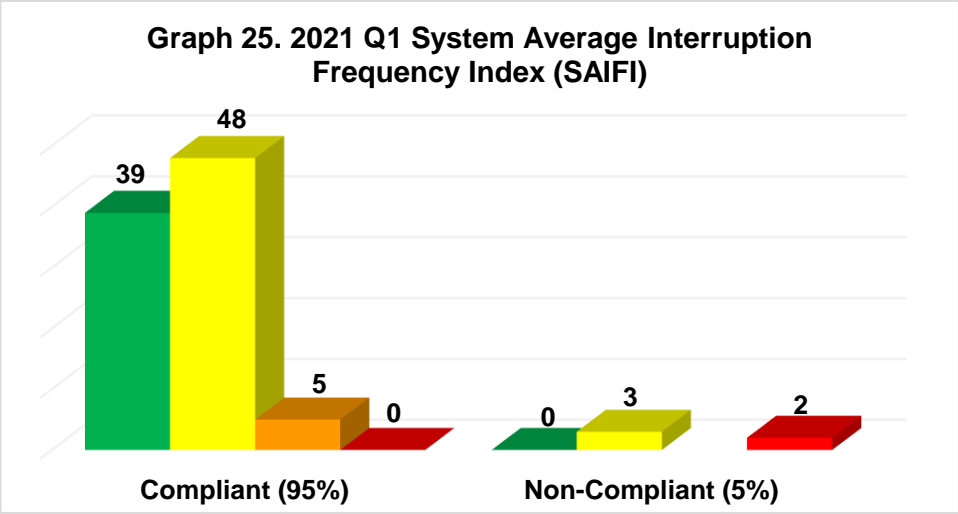
- a. Replacement of defective, malfunctioning, and inoperative kwh meters;
- b. Pole meter clustering;
- c. Vegetation management or right of way clearing;
- d. Line upgrading, line conversion, and line rehabilitation;
- e. Transformer load management which involves load centering of distribution transformer;
- f. Upgrading of overload distribution transformers; and
- g. Strict implementation of Anti-Pilferage and disconnection campaign

## **Power Reliability**

The electric cooperatives' ability to meet the electricity needs of the end-users is measured by these parameters.

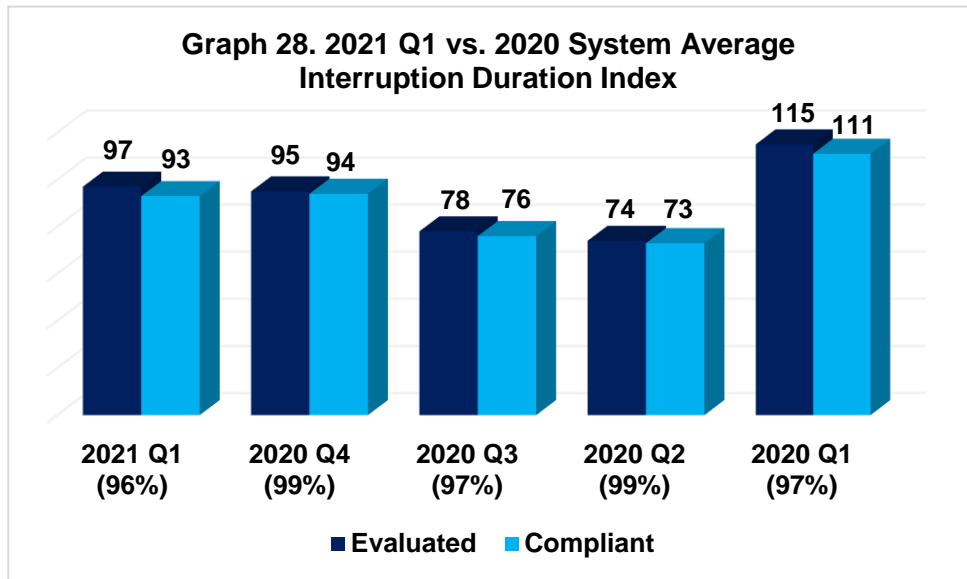
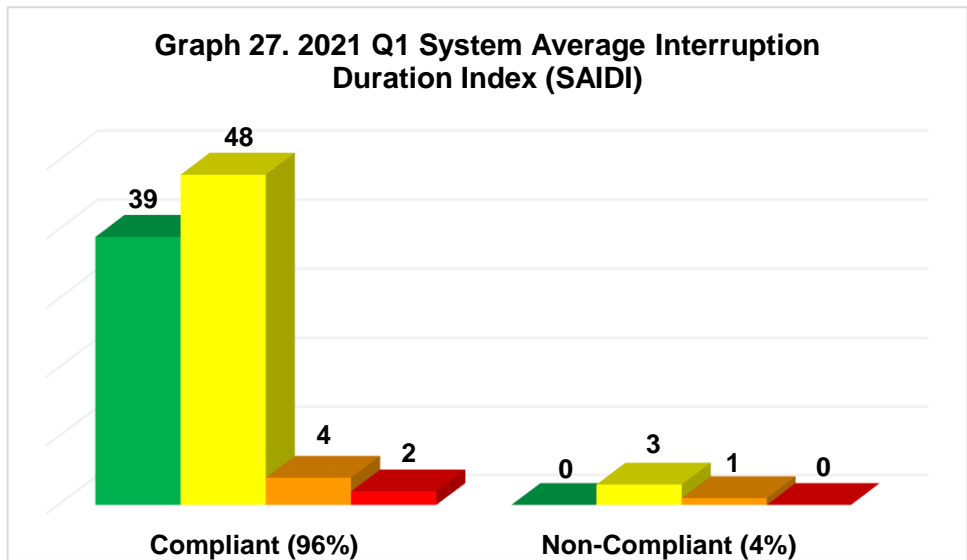
### **System Average Interruption Frequency Index (SAIFI)**

This parameter is defined as the total number of sustained customer power interruptions within a given period divided by the total number of customers served within the same period. For on-grid ECs, the standard is 25 interruptions per consumer per year while for off-grid ECs, 30 interruptions. Out of the 97 ECs evaluated, 92 were assessed as compliant or a 95% compliance level (Graph 25). It can be noted that there was a decrease in the level of compliance by 3% compared to the SAIFI reported for the fourth quarter of 2020 (Graph 26).



**System Average Interruption Duration Index (SAIDI)**

The total duration of sustained customer power interruptions within a given period divided by the total number of customers served within the same period makes up SAIDI. The standard is 2,700 minutes per consumer per year for on-grid ECs while 3,375 minutes per consumer for off-grid ECs. For the first quarter of 2021, 97 ECs were evaluated, and the result showed that 93 ECs were compliant or with 96% compliance level (Graph 27). The same as the SAIFI, it can be noted that there was also a decrease in the level of compliance by 3% compared to the SAIDI reported for the fourth quarter of 2020 (Graph 28).



### C. Institutional Standards and Parameters

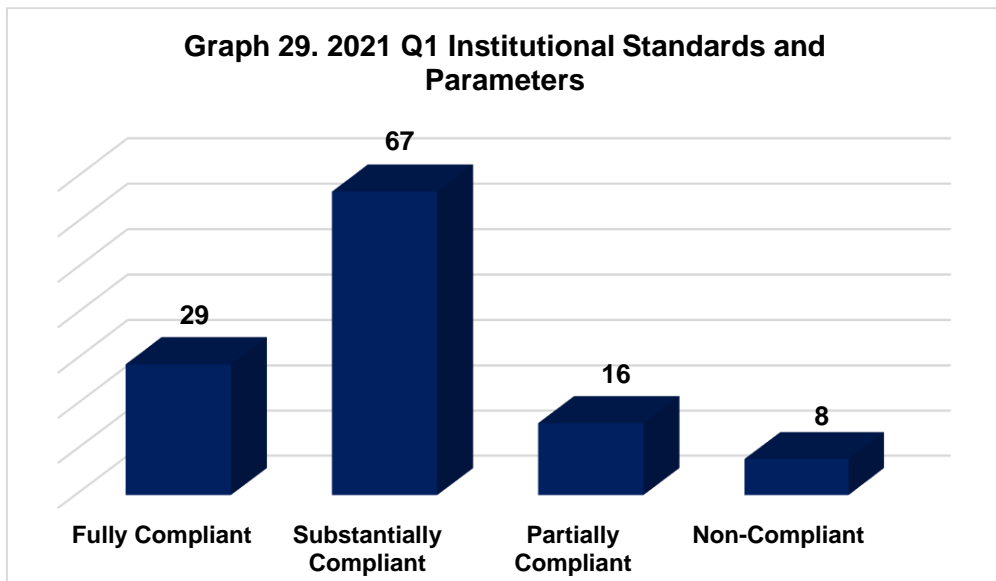
While the institutional norms and principles do not affect the classification of ECs, there are standards and parameters set by the NEA to assess EC performance in relation to management of operations and effective delivery of service to member-consumer-owners. The objective of establishing these institutional requirements is to empower MCOs by promoting active participation and in the activities of the ECs. For 2021, the classification and its corresponding rating was enhanced to demonstrate the actual level of compliance of ECs to the identified parameters. A fully compliant EC must have 100% performance score in the set institutional criteria. In range of 81% to 99%, ECs are considered substantially compliant, 61% to 80%, partially compliant while ECs with 60% and below are considered non-compliant. The bases of the assessment are good governance, leadership/management, and stakeholders (Table 7). For overall institutional ratings, see Appendix C.



**Table 7.** Institutional Standards and Parameters Criteria

<b>Parameter</b>	<b>Weight</b>
<b>Good Governance.</b>	<b>50%</b>
Cash Advances/Power Account Payable	10%
Board of Directors Attendance	10%
Continuing Qualifications	10%
Absence of Verified Complaint	5%
Organizational Restructuring	5%
IT Infrastructure	5%
Audit Rating	5%
<b>Leadership and Management</b>	<b>20%</b>
Employee-Consumer Ratio	10%
Availability of Retirement Fund	10%
<b>Stakeholders</b>	<b>30%</b>
Customer Service Standards	14%
Conduct of AGMA	6%
District Election	6%
Action on Consumer Complaint	4%
<b>Total</b>	<b>100%</b>

For this quarter, 29 ECs are fully compliant, 67 are substantially compliant, 16 are partially compliant, and 8 are non-compliant (Graph 29).



#### IV. Status of Rural Electrification Program

The objective of the Rural Electrification Program is to provide electricity through the ECs in accordance to the National Electrification Administration mandate “to pursue the total electrification of the country”.

When the Rural Electrification Program started in 1969, the level of electrification was at 19% and was only concentrated in cities and major economic centers. With the partnership of the government through the National Electrification Administration and its implementing arms, the electric cooperatives, the electrification level continued to rise. To account for the level of accomplishments, the Philippine Statistics Authority’s 2015 Census of Population was used as a basis for potential consumers.

For the first quarter of 2021, 94 out of 121 ECs are with 91% and above energization level. Of the 94 ECs, 75 have 100% accomplishment and the newest addition to the group is CASURECO I. The majority of ECs with 100% energization level are Yellow-1 with 42 ECs, while Green ECs come in second with 30 and 2 ECs come from Yellow-2 while one from Red ECs. On the other hand, nine (9) ECs have a level of energization below 70%, most of which come from Red ECs (Table 8). For a more comprehensive data, refer to Appendix D.

**Table 8.** 2021 Q1 Energization Level

Level of Energization	Green	Yellow-1	Yellow-2	Red	Total
100	30	42	2	1	75
97-99	2	4	1	1	8
94-96	2	3	1	0	6
91-93	1	4	0	0	5
88-90	0	4	0	0	4
85-87	2	4	0	0	6
82-84	1	1	0	0	2
79-81	0	2	1	0	3
76-78	0	0	0	0	0
73-75	1	0	1	0	2
70-72	0	0	1	0	1
Below 70	0	2	2	5	9
<b>Total</b>	<b>39</b>	<b>66</b>	<b>9</b>	<b>7</b>	<b>121</b>

## V. Appendices

### Appendix A: Electric Cooperatives Performance Assessment Sheet

Green Electric Cooperatives Performance Assessment Sheet															
Electric Cooperatives	Cash General Fund		Collection Efficiency (%)	Accounts Payable				Result of Financial Operation (Before RFSC)*	Net Worth			System Loss (%)	System Reliability		Energization Level (%)
	Working Capital Fund*	One Month Working Capital Requirement*		Power		Financial Institutions			2021 Net Worth*	2020 Net Worth*	2019 Net Worth*		SAIFI	SAIDI	
				GENCO	NGCP	NEA	BANKS								
<b>Region I - Ilocos Region</b>															
ISECO	597,654	171,395	99.00	Current	Current	Current	N/A	22,598	1,415,339	1,392,410	1,243,825	8.93%	0.73	20.29	100.00
LUELCO	227,979	136,382	95.62	Current	Current	Current	Current	21,394	1,192,027	1,178,005	1,127,561	10.20%	0.22	19.79	100.00
PANELCO III	684,968	223,946	95.20	Current	Current	N/A	Current	51,266	2,053,697	2,044,726	1,895,181	5.38%	0.65	0.04	100.00
<b>CAR - Cordillera Administrative Region</b>															
BENECO	613,702	220,589	95.35	Current	Current	Current	Current	7,274	2,398,079	2,314,908	2,214,907	7.73%	2.35	523.12	97.79
<b>Region III - Central Luzon</b>															
TARELCO II	566,061	175,391	96.28	Current	Current	N/A	N/A	27,340	1,741,995	1,752,003	1,564,512	7.60%	1.91	61.65	100.00
NEECO I	493,917	118,607	98.62	Current	Current	Current	N/A	2,896	1,089,816	1,092,157	1,033,892	8.67%	2.43	47.24	100.00
NEECO II - AREA 1	379,206	142,211	99.77	Current	Current	Current	N/A	27,584	995,257	974,152	884,478	10.53%	0.95	101.25	100.00
PRESCO	99,049	40,966	98.35	Current	Current	Current	Current	6,949	258,135	252,243	224,923	10.36%	1.91	233.26	100.00
ZAMECO I	358,736	73,670	96.19	Current	Current	Current	Current	20,617	778,470	757,186	640,875	7.03%	2.08	74.81	100.00
<b>Region IV-A - CALABARZON</b>															
BATELEC II	1,389,849	433,831	96.62	Current	Current	Current	Current	90,823	4,593,958	4,453,451	4,033,661	8.86%	1.14	46.54	100.00
QUEZELCO II	108,374	29,852	97.87	Current	Current	Current	Current	5,985	485,430	472,116	451,463	6.87%	0.95	142.36	87.27
<b>Region IV-B - MIMAROPA</b>															
TIELCO	36,900	28,601	100.00	Current	N/A	Current	Current	2,036	217,667	236,245	228,815	7.00%	2.71	116.04	100.00
<b>Region V - Bicol Region</b>															
CASURECO IV	148,507	40,224	99.66	Current	Current	Current	Current	2,100	916,878	919,493	901,459	9.49%	0.41	29.19	100.00
<b>Region VI - Western Visayas</b>															
CAPELCO	280,811	178,711	96.76	Current	Current	Current	Current	2,338	1,182,273	1,196,836	1,167,506	10.94%	1.46	47.67	100.00
ILECO I	1,205,092	230,505	96.45	Current	Current	Current	Current	8,298	1,952,062	1,935,005	1,737,795	7.05%	0.00	0.00	100.00
ILECO II	533,992	132,714	95.91	Current	Current	Current	Current	7,244	1,381,205	1,381,898	1,291,781	10.36%	3.44	186.64	91.00
ILECO III	316,899	81,668	99.54	Current	Current	Current	Current	11,279	649,039	622,970	552,495	6.83%	2.50	63.03	95.35
GUIMELCO	46,345	30,701	98.01	Current	Current	Current	N/A	12,705	508,461	502,488	459,634	8.98%	1.08	76.32	98.13

## Appendix A: Electric Cooperatives Performance Assessment Sheet

Green Electric Cooperatives Performance Assessment Sheet															
Electric Cooperatives	Cash General Fund		Collection Efficiency (%)	Accounts Payable				Result of Financial Operation (Before RFSC)*	Net Worth			System Loss (%)	System Reliability		Energization Level (%)
	Working Capital Fund*	One Month Working Capital Requirement*		Power		Financial Institutions			2021 Net Worth*	2020 Net Worth*	2019 Net Worth*		SAIFI	SAIDI	
				GENCO	NGCP	NEA	BANKS								
<b>Region VII - Central Visayas</b>															
NORECO I	133,585	57,172	97.28	Current	Current	Current	Current	368	597,680	596,996	562,374	10.85%	6.20	462.76	75.55
BANELCO	39,207	26,305	99.55	Current	N/A	Current	N/A	1,995	450,037	431,063	428,852	8.40%	0.00	270.77	100.00
CEBECO I	698,266	139,954	100.00	Current	Current	N/A	Current	26,500	1,441,741	1,416,325	1,304,637	6.32%	2.34	148.47	100.00
CEBECO II	683,732	186,766	96.37	Current	Current	N/A	Current	49,456	1,966,123	1,928,075	1,736,571	8.05%	0.38	26.95	100.00
PROSIELCO	45,130	19,139	100.00	Current	N/A	Current	N/A	309	182,508	181,823	181,356	8.05%	5.11	310.60	100.00
BOHECO I	513,526	113,859	99.23	Current	Current	Current	Current	14,548	1,410,511	1,399,623	1,325,387	6.42%	2.90	231.34	100.00
<b>Region VIII - Eastern Visayas</b>															
DORELCO	119,586	57,206	98.53	Current	Current	Current	N/A	5,840	670,254	679,940	647,537	11.02%	2.25	124.90	96.30
LEYECO II	347,849	162,892	98.34	Current	Res.Current	N/A	Current	14,851	874,421	868,047	779,649	6.41%	0.69	30.55	100.00
LEYECO IV	206,404	55,143	96.53	Current	Current	Current	N/A	324	660,698	652,482	591,743	10.05%	3.47	212.70	100.00
SOLECO	446,790	78,209	100.00	Current	Current	Current	Current	7,243	1,438,749	1,432,119	1,339,572	11.61%	5.75	543.47	100.00
NORSAMELCO	80,631	67,379	99.06	Current	Current	Current	Current	10,663	356,169	355,622	512,078	9.89%	3.27	174.08	87.72
SAMELCO I	119,740	47,761	100.00	Current	Current	Current	Current	9,534	422,082	425,993	441,455	4.75%	0.77	20.94	100.00
<b>Region X - Northern Mindanao</b>															
MOELCI I	69,299	49,324	97.75	Current	Current	Current	Current	692	276,823	276,133	272,080	9.82%	3.99	439.42	100.00
BUSECO	139,140	132,861	98.68	Current	Current	Current	Current	31,343	1,302,315	1,300,148	1,110,371	9.45%	0.00	0.00	100.00

## Appendix A: Electric Cooperatives Performance Assessment Sheet

Green Electric Cooperatives Performance Assessment Sheet															
Electric Cooperatives	Cash General Fund		Collection Efficiency (%)	Accounts Payable				Result of Financial Operation (Before RFSC)*	Net Worth			System Loss (%)	System Reliability		Energization Level (%)
	Working Capital Fund*	One Month Working Capital Requirement*		Power		Financial Institutions			2021 Net Worth*	2020 Net Worth*	2019 Net Worth*		SAIFI	SAIDI	
				GENCO	NGCP	NEA	BANKS								
<b>Region XII - SOCCSKSARGEN</b>															
SOCOTECO I	580,213	204,446	100.00	Res.Current	Current	Current	Current	101	1,479,442	1,462,002	1,412,988	10.15%	3.04	134.78	82.04
<b>Region XIII - CARAGA</b>															
ANECO	322,343	224,941	97.17	Current	Current	Current	Current	11,867	1,177,242	1,139,009	1,185,090	11.87%	2.17	116.16	100.00
SURNECO	131,161	125,857	97.69	Current	Current	Current	Current	543	404,152	409,853	425,646	9.24%	3.28	240.73	100.00
SIARELCO	112,812	24,072	100.00	Current	Current	Current	Current	5,813	360,946	351,173	326,252	7.53%	1.13	161.60	100.00
DIELCO	88,476	12,228	100.00	Current	N/A	Current	N/A	4,151	268,167	253,337	229,087	1.91%	2.49	0.01	100.00
SURSECO I	77,486	44,610	98.39	Current	Current	Current	Current	6,646	597,794	602,572	590,333	10.83%	1.69	244.10	100.00
SURSECO II	106,620	66,975	99.01	Current	Current	Current	Current	6,846	470,131	464,384	390,336	11.12%	1.34	52.12	100.00

Note: \* - In Thousand Pesos

## Appendix A: Electric Cooperatives Performance Assessment Sheet

Yellow-1 Electric Cooperatives Performance Assessment Sheet															
Electric Cooperatives	Cash General Fund		Collection Efficiency (%)	Accounts Payable				Result of Financial Operation (Before RFSC)*	Net Worth			System Loss (%)	System Reliability		Energization Level (%)
	Working Capital Fund*	One Month Working Capital Requirement*		Power		Financial Institutions			2021 Net Worth*	2020 Net Worth*	2019 Net Worth*		SAIFI	SAIDI	
				GENCO	NGCP	NEA	BANKS								
<b>Region I - Ilocos Region</b>															
INEC	148,525	183,778	100.00	Current	Current	Current	Current	24,656	720,228	776,175	1,176,665	8.97%	2.88	242.16	100.00
PANELCO I	190,757	79,159	100.00	Current	Current	N/A	Current	9,383	804,578	805,987	787,288	12.55%	dns	dns	100.00
<b>Region II - Cagayan Valley</b>															
CAGELCO I	385,894	159,419	99.13	Current	Current	Current	Current	-38,763	1,241,985	1,280,720	1,143,113	11.43%	dns	dns	100.00
CAGELCO II	434,631	99,742	100.00	Current	Current	Current	Current	-112	1,281,435	1,287,954	1,160,738	8.64%	dns	dns	98.71
ISELCO I	541,302	273,030	95.90	Current	Current	Current	Current	-18,765	1,169,338	1,279,474	914,718	9.82%	0.86	28.99	100.00
ISELCO II	154,134	194,972	88.62	Current	Current	Current	Current	-24,628	1,295,526	1,351,965	1,129,218	10.29%	2.84	101.76	100.00
NUVELCO	109,587	99,437	85.53	Current	Current	N/A	dns	31,845	1,459,428	1,416,278	1,303,456	7.77%	2.91	98.60	100.00
QUIRELCO	127,465	25,920	97.95	Current	Current	N/A	dns	7,509	517,706	511,146	480,112	11.88%	dns	dns	100.00
<b>CAR - Cordillera Administrative Region</b>															
IFELCO	16,105	15,489	87.62	Arrears	Current	Current	Current	5,634	574,226	566,088	551,573	11.33%	dns	dns	100.00
KAELCO	86,548	31,864	74.49	Current	Current	Current	Current	1,583	677,230	681,974	633,394	15.56%	0.10	16.02	91.02
MOPRECO	59,712	17,914	99.84	Current	Current	Arrears	N/A	5,016	460,631	461,582	440,266	8.09%	0.79	48.69	100.00
<b>Region III - Central Luzon</b>															
AURELCO	119,817	38,514	94.31	Current	Current	Current	N/A	14,179	604,766	598,932	512,852	5.36%	1.51	135.34	100.00
TARELCO I	983,841	207,999	94.44	Current	Current	Current	N/A	9,000	1,680,990	1,712,744	1,562,727	7.03%	2.08	139.33	100.00
NEECO II - AREA 2	602,834	149,259	93.18	Current	Current	Current	N/A	92,649	1,360,418	1,276,241	1,159,509	7.32%	0.60	25.87	99.89
SAJELCO	227,670	62,638	95.91	Current	Current	N/A	Current	19,238	525,084	508,681	508,476	8.10%	dns	dns	100.00
PELCO I	1,000,293	166,259	98.31	Current	Current	N/A	N/A	-1,360	2,458,527	2,444,082	2,142,938	7.36%	0.56	21.56	100.00
PELCO II	356,659	315,707	97.51	Arrears	Current	N/A	Current	-8,346	-260,022	-251,648	-619,847	10.02%	1.32	0.13	100.00
PELCO III	258,906	145,652	89.63	Arrears	Current	Current	N/A	5,512	-144,037	-334,259	-64,214	9.36%	0.27	4.88	100.00
PENELCO	711,859	305,290	95.83	Current	Current	Current	Current	-20,159	2,610,261	2,650,560	2,381,669	5.50%	0.47	41.19	100.00
ZAMECO II	174,454	106,160	92.77	Current	Current	Current	Current	17,616	876,158	862,545	809,634	9.26%	1.45	34.32	100.00
<b>Region IV-A - CALABARZON</b>															
FLECO	103,856	68,059	99.24	Current	Current	Current	N/A	-4,126	584,643	602,242	624,539	9.84%	1.26	55.42	100.00
BATELEC I	466,893	220,818	93.88	Current	Current	N/A	N/A	5,689	1,262,336	1,314,819	1,608,475	9.25%	0.00	107.22	100.00
QUEZELCO I	207,109	126,879	96.28	Current	Current	Current	Current	-26,110	1,330,832	1,365,476	1,286,809	14.11%	1.60	258.73	89.22

## Appendix A: Electric Cooperatives Performance Assessment Sheet

Yellow-1 Electric Cooperatives Performance Assessment Sheet															
Electric Cooperatives	Cash General Fund		Collection Efficiency (%)	Accounts Payable				Result of Financial Operation (Before RFSC)*	Net Worth			System Loss (%)	System Reliability		Energization Level (%)
	Working Capital Fund*	One Month Working Capital Requirement*		Power		Financial Institutions			2021 Net Worth*	2020 Net Worth*	2019 Net Worth*		SAIFI	SAIDI	
				GENCO	NGCP	NEA	BANKS								
<b>Region IV-B - MIMAROPA</b>															
LUBELCO	3,070	3,782	96.83	Current	N/A	Arrears	Current	867	82,386	73,157	88,686	8.44%	4.39	284.64	100.00
OMEKO	132,629	74,588	95.64	Res.Current	N/A	Current	Current	31,091	678,493	599,516	544,358	12.22%	dns	dns	86.05
ORMECO	138,770	183,227	94.68	Res.Current	N/A	Current	N/A	5,266	1,929,224	1,915,748	1,838,032	11.23%	4.96	260.99	100.00
MARELCO	32,240	33,519	100.00	Current	N/A	Current	Current	221	367,040	375,821	361,168	8.96%	5.51	436.48	100.00
ROMELCO	12,815	15,662	96.23	Current	N/A	Current	Current	4,593	404,522	403,156	395,932	11.03%	1.72	54.39	100.00
BISELCO	99,364	16,703	100.00	Current	N/A	Current	Current	466	394,238	393,544	324,491	dns	dns	dns	93.40
PALECO	695,637	187,751	90.06	Current	N/A	N/A	Current	26,516	1,078,975	1,060,366	1,055,427	9.69%	6.52	506.79	84.37
<b>Region V - Bicol Region</b>															
CANORECO	316,379	111,439	93.58	Current	Current	Current	Current	27,075	840,503	837,982	731,372	9.93%	dns	dns	100.00
CASURECO I	51,711	54,813	99.82	Res.Current	Current	Current	Current	-12,908	919,807	930,749	936,379	8.50%	8.18	174.78	100.00
CASURECO II	477,956	204,607	100.00	Current	Current	Current	N/A	2,059	610,624	650,360	684,357	6.26%	6.31	2.38	100.00
SORECO I	63,365	35,877	93.46	Current	Current	Current	Current	17,478	403,736	401,228	341,085	10.66%	4.92	308.32	100.00
SORECO II	205,999	78,607	94.80	Res.Current	Current	Current	Current	1,714	849,403	848,672	765,898	11.33%	2.28	160.78	100.00
FICELCO	40,990	32,366	99.13	Current	N/A	Current	Current	400	257,357	254,852	212,623	11.24%	10.75	1,333.81	100.00
TISELCO	10,834	6,660	73.65	Current	N/A	Current	dns	2,628	146,001	145,831	dns	10.70%	3.01	25.29	89.09
<b>Region VI - Western Visayas</b>															
AKELCO	223,846	178,436	91.21	Current	Current	Current	Current	-25,250	1,204,579	1,167,231	1,328,288	10.02%	2.24	0.22	100.00
ANTECO	203,548	84,184	93.05	Current	Current	N/A	Current	11,041	1,619,223	1,614,415	1,597,847	4.23%	dns	dns	100.00
NONECO	164,609	166,709	99.42	Current	Current	Current	Current	-40,037	897,542	931,851	947,298	11.12%	1.11	118.16	90.42
CENEKO	737,938	572,088	90.53	Res.Current	Current	Current	Current	88	3,134,752	3,173,626	3,101,602	11.16%	2.90	1,437.05	100.00
NOCECO	578,961	189,926	98.99	Current	Current	N/A	Current	-44,235	1,589,360	1,611,646	1,551,278	13.43%	1.65	113.92	81.36
<b>Region VII - Central Visayas</b>															
NORECO II	615,467	213,176	94.63	Current	Current	N/A	Current	2,606	1,712,494	1,660,264	1,593,000	11.80%	2.45	60.30	100.00
CEBECO III	398,451	87,974	100.00	Current	Current	N/A	Current	11,659	857,374	883,047	828,433	9.10%	1.20	756.39	100.00
CELCO	7,236	12,650	99.98	Current	N/A	Current	N/A	353	176,821	176,388	172,937	7.34%	0.00	0.00	100.00
BOHECO II	222,843	103,534	100.00	Current	Current	Current	Current	-2,168	703,603	706,518	706,752	9.28%	1.15	96.00	100.00

## Appendix A: Electric Cooperatives Performance Assessment Sheet

Yellow-1 Electric Cooperatives Performance Assessment Sheet															
Electric Cooperatives	Cash General Fund		Collection Efficiency (%)	Accounts Payable				Result of Financial Operation (Before RFSC)*	Net Worth			System Loss (%)	System Reliability		Energization Level (%)
	Working Capital Fund*	One Month Working Capital Requirement*		Power		Financial Institutions			2021 Net Worth*	2020 Net Worth*	2019 Net Worth*		SAIFI	SAIDI	
				GENCO	NGCP	NEA	BANKS								
<b>Region VIII - Eastern Visayas</b>															
LEYECO III	62,073	41,703	96.19	Current	Current	Current	Current	-217	450,958	457,710	417,183	9.83%	0.00	9.01	100.00
LEYECO V	358,018	134,673	93.09	Current	Res.Current	Current	Current	186	1,699,604	1,713,894	1,570,462	8.48%	1.02	40.92	96.19
BILECO	135,949	30,405	97.73	Res.Current	Current	Current	N/A	-4,892	391,898	391,445	367,704	12.99%	4.31	254.37	100.00
SAMELCO II	116,246	61,369	97.48	Current	Current	Current	N/A	-14,767	913,140	933,263	869,871	11.56%	dns	dns	98.48
ESAMELCO	152,909	65,170	100.00	Current	Current	Current	Current	-4,360	1,209,395	1,219,354	1,254,522	9.27%	dns	dns	99.30
<b>Region IX - Zamboanga Peninsula</b>															
ZANECO	94,565	172,661	97.18	Current	Current	Current	Current	-11,033	1,004,923	1,084,439	957,620	9.99%	3.95	3.82	79.86
ZAMSURECO I	357,649	183,622	99.60	Current	Current	Current	Current	18,044	1,814,631	1,761,606	1,684,299	13.61%	2.45	106.42	85.25
<b>Region X - Northern Mindanao</b>															
MOELCI II	160,081	121,404	96.77	Res.Current	Current	N/A	N/A	-7,528	367,969	370,076	332,973	10.29%	1.72	61.40	100.00
MORESCO I	317,775	241,325	95.76	Current	Current	Current	Current	-16,635	1,696,184	1,706,011	1,562,843	5.51%	2.37	127.35	100.00
MORESCO II	285,023	111,736	93.21	Arrears	Current	Current	Arrears	-3,968	455,969	519,653	606,542	10.32%	1.68	164.95	95.17
CAMELCO	36,179	19,211	98.93	Arrears	Current	Current	Current	6,171	378,022	373,733	349,450	12.28%	4.71	251.68	100.00
LANECO	56,932	81,386	96.26	Current	Current	Current	Current	-8,721	449,795	459,313	431,718	12.71%	0.00	0.00	87.81
<b>Region XI - Davao Region</b>															
DORECO	26,390	90,098	92.65	Current	Current	Current	Current	6,045	586,586	566,738	540,848	12.13%	0.00	0.00	92.71
DASURECO	332,914	263,966	93.99	Current	Current	Current	Current	26,832	2,344,781	2,345,250	2,007,942	9.76%	3.16	2.31	88.23
<b>Region XII - SOCCSKSARGEN</b>															
COTELCO	270,774	156,941	95.30	Current	Current	Current	Current	1,596	1,704,050	1,621,733	1,638,506	9.86%	dns	dns	94.22
COTELCO-PPALMA	65,486	71,243	96.77	Current	Current	Current	Current	4,620	482,229	487,774	603,650	dns	dns	dns	62.84
SOCOTECO II	581,349	576,922	91.77	Current	Current	Current	Current	965	1,986,524	1,978,747	1,774,039	7.68%	dns	dns	86.59
SUKELCO	190,179	134,803	90.23	Current	Current	Current	Current	17,411	1,436,375	1,452,650	1,425,909	11.27%	1.89	39.44	93.46
<b>ARMM - Autonomous Region in Muslim Mindanao</b>															
MAGELCO	21,323	33,776	16.77	Arrears	Arrears	Arrears	dns	52,528	997,142	1,040,441	-373,183	8.20%	4.21	484.59	63.02
<b>Region XIII - CARAGA</b>															
ASELCO	186,029	182,486	94.75	Current	Current	Current	Current	379	1,522,519	1,532,341	1,535,073	9.19%	2.57	135.27	100.00

Note: \* - In Thousand Pesos



## Appendix A: Electric Cooperatives Performance Assessment Sheet

Yellow-2 Electric Cooperatives Performance Assessment Sheet															
Electric Cooperatives	Cash General Fund		Collection Efficiency (%)	Accounts Payable				Result of Financial Operation (Before RFSC)*	Net Worth			System Loss (%)	System Reliability		Energization Level (%)
	Working Capital Fund*	One Month Working Capital Requirement*		Power		Financial Institutions			2021 Net Worth*	2020 Net Worth*	2019 Net Worth*		SAIFI	SAIDI	
				GENCO	NGCP	NEA	BANKS								
<b>Region I - Ilocos Region</b>															
CENPELCO	139,834	295,025	90.05	Res.Current	Current	Current	Current	-38	1,845,765	1,860,220	1,742,770	8.31%	4.06	3,156.56	100.00
<b>Region II - Cagayan Valley</b>															
BATANELCO	6,193	6,193	94.54	Current	N/A	Current	N/A	-142	367,164	368,632	352,381	dns	0.26	33.79	100.00
<b>Region V - Bicol Region</b>															
CASURECO III	89,465	90,109	93.55	Current	Current	Current	Current	-11,138	-190,313	-181,430	-265,459	11.10%	1.96	69.70	99.69
<b>Region IX - Zamboanga Peninsula</b>															
ZAMSURECO II	15,493	109,670	94.08	Res.Arrears	Current	Current	Current	-23,266	1,604	29,094	309,173	23.77%	dns	dns	70.69
ZAMCELCO	1,289,801	385,941	93.67	Arrears	Current	Current	N/A	-86,773	1,441,861	1,656,349	2,020,998	23.94%	1.86	62.24	79.97
<b>Region X - Northern Mindanao</b>															
FIBECO	198,414	171,882	93.53	Arrears	Current	Current	Current	-24,553	1,078,684	736,649	802,031	13.48%	dns	dns	95.94
<b>Region XI - Davao Region</b>															
DANECO	555,290	353,462	56.61	Res.Arrears	Current	Current	Current	-11,330	2,036,448	2,083,922	2,103,842	12.42%	3.81	3.79	74.94
<b>ARMM - Autonomous Region in Muslim Mindanao</b>															
SIASELCO	7,799	2,901	0.00	Current	N/A	Current	dns	756	105,265	88,528	100,739	dns	dns	dns	24.81
CASELCO	dns	dns	dns	Res.Arrears	N/A	Current	dns	dns	dns	dns	dns	dns	dns	dns	67.42

Note: \* - In Thousand Pesos

## Appendix A: Electric Cooperatives Performance Assessment Sheet

Red Electric Cooperatives Performance Assessment Sheet															
Electric Cooperatives	Cash General Fund		Collection Efficiency (%)	Accounts Payable				Result of Financial Operation (Before RFSC)*	Net Worth			System Loss (%)	System Reliability		Energization Level (%)
	Working Capital Fund*	One Month Working Capital Requirement*		Power		Financial Institutions			2021 Net Worth*	2020 Net Worth*	2019 Net Worth*		SAIFI	SAIDI	
				GENCO	NGCP	NEA	BANKS								
<b>CAR - Cordillera Administrative Region</b>															
ABRECO	15,018	39,358	90.46	Arrears	Current	Current	Current	8,147	5,151	27,574	-44,578	17.04%	dns	dns	100.00
<b>Region V - Bicol Region</b>															
ALECO	434,861	276,400	77	Res.Arrears	Arrears	Arrears	dns	-109,734	-1,364,658	-1,254,533	-1,004,703	dns	dns	dns	99
MASELCO	48,022	60,121	96	Arrears	N/A	Current	Current	11,294	282,315	262,140	322,010	0	9	581	64
<b>ARMM - Autonomous Region in Muslim Mindanao</b>															
TAWELCO	16,960	20,193	25	Arrears	N/A	Current	Current	-25,653	-1,247,316	-1,189,383	dns	0	9	0	22
SULECO	128,124	22,375	37	Arrears	N/A	Current	dns	10,867	-762,408	-772,333	-849,903	0	dns	dns	26
BASELCO	39,997	32,843	58	Arrears	N/A	Current	dns	-18,174	-1,829,481	-1,811,543	-1,444,361	0	dns	dns	52
LASURECO	9,157	61,156	23	Arrears	Arrears	Arrears	dns	-159,450	-1,454,285	-1,282,258	dns	1	dns	dns	60

Note: \* - In Thousand Pesos

**Appendix B: System Reliability Indices**

<b>Electric Cooperatives</b>	<b>SAIFI</b>	<b>STATUS</b>	<b>SAIDI</b>	<b>STATUS</b>
<b>Region I</b>				
INEC	2.88	C	242.16	C
ISECO	0.73	C	20.29	C
LUELCO	0.22	C	19.79	C
PANELCO I	dns	NC	dns	NC
CENPELCO	4.06	C	3,156.56	NC
PANELCO III	0.65	C	0.04	C
<b>Region II</b>				
BATANELCO	0.26	C	33.79	C
CAGELCO I	dns	NC	dns	NC
CAGELCO II	dns	NC	dns	NC
ISELCO I	0.86	C	28.99	C
ISELCO II	2.84	C	101.76	C
NUVELCO	2.91	C	98.60	C
QUIRELCO	dns	NC	dns	NC
<b>CAR</b>				
ABRECO	dns	NC	dns	NC
BENECO	2.35	C	523.12	C
IFELCO	dns	NC	dns	NC
KAELCO	0.10	C	16.02	C
MOPRECO	0.79	C	48.69	C
<b>Region III</b>				
AURELCO	1.51	C	135.34	C
TARELCO I	2.08	C	139.33	C
TARELCO II	1.91	C	61.65	C
NEECO I	2.43	C	47.24	C
NEECO II – AREA 1	0.95	C	101.25	C
NEECO II – AREA 2	0.60	C	25.87	C
SAJELCO	dns	NC	dns	NC
PRESCO	1.91	C	233.26	C
PELCO I	0.56	C	21.56	C
PELCO II	1.32	C	0.13	C
PELCO III	0.27	C	4.88	C
PENELCO	0.47	C	41.19	C
ZAMECO I	2.08	C	74.81	C
ZAMECO II	1.45	C	34.32	C

*Note: C – Compliant, NC – Non-Compliant*

**Appendix B: System Reliability Indices**

<b>Electric Cooperatives</b>	<b>SAIFI</b>	<b>STATUS</b>	<b>SAIDI</b>	<b>STATUS</b>
<b>Region IV-A</b>				
FLECO	1.26	C	55.42	C
BATELEC I	0.00	C	107.22	C
BATELEC II	1.14	C	46.54	C
QUEZELCO I	1.60	C	258.73	C
QUEZELCO II	0.95	C	142.36	C
<b>Region IV-B</b>				
LUBELCO	4.39	C	284.64	C
OMECO	dns	NC	dns	NC
ORMECO	4.96	C	260.99	C
MARELCO	5.51	C	436.48	C
TIELCO	2.71	C	116.04	C
ROMELCO	1.72	C	54.39	C
BISELCO	dns	NC	dns	NC
PALECO	6.52	NC	506.79	C
<b>Region V</b>				
CANORECO	dns	NC	dns	NC
CASURECO I	8.18	NC	174.78	C
CASURECO II	6.31	NC	2.38	C
CASURECO III	1.96	C	69.70	C
CASURECO IV	0.41	C	29.19	C
ALECO	dns	NC	dns	NC
SORECO I	4.92	C	308.32	C
SORECO II	2.28	C	160.78	C
FICELCO	10.75	NC	1,333.81	C
MASELCO	8.93	NC	581.43	C
TISELCO	3.01	C	25.29	C
<b>Region VI</b>				
AKELCO	2.24	C	0.22	C
ANTECO	dns	NC	dns	NC
CAPELCO	1.46	C	47.67	C
ILECO I	1.72	C	24.44	C
ILECO II	3.44	C	186.64	C
ILECO III	2.50	C	63.03	C
GUIMELCO	1.08	C	76.32	C
NONECO	1.11	C	118.16	C
CENECO	2.90	C	1,437.05	NC
NOCECO	1.65	C	113.92	C

*Note: C – Compliant, NC – Non-Compliant*

**Appendix B: System Reliability Indices**

<b>Electric Cooperatives</b>	<b>SAIFI</b>	<b>STATUS</b>	<b>SAIDI</b>	<b>STATUS</b>
<b>Region VII</b>				
NORECO I	6.20	C	462.76	C
NORECO II	2.45	C	60.30	C
BANELCO	4.79	C	270.77	C
CEBECO I	2.34	C	148.47	C
CEBECO II	0.38	C	26.95	C
CEBECO III	1.20	C	756.39	NC
PROSIELCO	5.11	C	310.60	C
CELCO	2.99	C	70.43	C
BOHECO I	2.90	C	231.34	C
BOHECO II	1.15	C	96.00	C
<b>Region VIII</b>				
DORELCO	2.25	C	124.90	C
LEYECO II	0.69	C	30.55	C
LEYECO III	0.00	C	9.01	C
LEYECO IV	3.47	C	212.70	C
LEYECO V	1.02	C	40.92	C
SOLECO	5.75	C	543.47	C
BILECO	4.31	C	254.37	C
NORSAMELCO	3.27	C	174.08	C
SAMELCO I	0.77	C	20.94	C
SAMELCO II	dns	NC	dns	NC
ESAMELCO	dns	NC	dns	NC
<b>Region IX</b>				
ZANECO	3.95	C	3.82	C
ZAMSURECO I	2.45	C	106.42	C
ZAMSURECO II	dns	NC	dns	NC
ZAMCELCO	1.86	C	62.24	C
<b>Region X</b>				
MOELCI I	3.99	C	439.42	C
MOELCI II	1.72	C	61.4	C
MORESCO I	2.37	C	127.35	C
MORESCO II	1.68	C	164.95	C
FIBECO	dns	NC	dns	NC
BUSECO	0.00	C	0.03	C
CAMELCO	4.71	C	251.68	C
LANECO	0.82	C	35.93	C

*Note: C – Compliant, NC – Non-Compliant*

**Appendix B: System Reliability Indices**

<b>Electric Cooperatives</b>	<b>SAIFI</b>	<b>STATUS</b>	<b>SAIDI</b>	<b>STATUS</b>
<b>Region XI</b>				
DORECO	0.00	C	331.32	C
DANECO	3.81	C	3.79	C
DASURECO	3.16	C	2.31	C
<b>Region XII</b>				
COTELCO	dns	NC	dns	NC
COTELCO-PPALMA	dns	NC	dns	NC
SOCOTECO I	3.04	C	134.78	C
SOCOTECO II	dns	NC	dns	NC
SUKELCO	1.89	C	39.44	C
<b>ARMM</b>				
TAWELCO	8.59	NC	0.16	C
SIASELCO	dns	NC	dns	NC
SULECO	dns	NC	dns	NC
BASELCO	dns	NC	dns	NC
CASELCO	dns	NC	dns	NC
LASURECO	dns	NC	dns	NC
MAGELCO	4.21	C	484.59	C
<b>CARAGA</b>				
ANECO	2.17	C	116.16	C
ASELCO	2.57	C	135.27	C
SURNECO	3.28	C	240.73	C
SIARELCO	1.13	C	161.60	C
DIELCO	2.49	C	0.01	C
SURSECO I	1.69	C	244.10	C
SURSECO II	1.34	C	52.12	C

*Note: C – Compliant, NC – Non-Compliant*

### Appendix C: Institutional Rating Compliance Table

Electric Cooperatives	Institutional Rating	Color Classification
<b>Region I</b>		
INEC	90	Yellow-1
ISECO	89	Green
LUELCO	100	Green
PANELCO I	80	Yellow-1
CENPELCO	77	Yellow-2
PANELCO III	97	Green
<b>Region II</b>		
BATANELCO	90	Yellow-2
CAGELCO I	88	Yellow-1
CAGELCO II	90	Yellow-1
ISELCO I	100	Yellow-1
ISELCO II	80	Yellow-1
NUVELCO	91	Yellow-1
QUIRELCO	74	Yellow-1
<b>CAR</b>		
ABRECO	67	Red
BENECO	85	Green
IFELCO	87	Yellow-1
KAELCO	78	Yellow-1
MOPRECO	99	Yellow-1
<b>Region III</b>		
AURELCO	99	Yellow-1
TARELCO I	95	Yellow-1
TARELCO II	100	Green
NEECO I	100	Green
NEECO II – AREA 1	100	Green
NEECO II – AREA 2	100	Yellow-1
SAJELCO	90	Yellow-1
PRESCO	99	Green
PELCO I	98	Yellow-1
PELCO II	95	Yellow-1
PELCO III	90	Yellow-1
PENELCO	100	Yellow-1
ZAMECO I	100	Green
ZAMECO II	99	Yellow-1

**Appendix C: Institutional Rating Compliance Table**

<b>Electric Cooperatives</b>	<b>Institutional Rating</b>	<b>Color Classification</b>
<b>Region IV-A</b>		
FLECO	97	Yellow-1
BATELEC I	97	Yellow-1
BATELEC II	100	Green
QUEZELCO I	100	Yellow-1
QUEZELCO II	90	Green
<b>Region IV-B</b>		
LUBELCO	90	Yellow-1
OMECO	89	Yellow-1
ORMECO	95	Yellow-1
MARELCO	100	Yellow-1
TIELCO	100	Green
ROMELCO	97	Yellow-1
BISELCO	95	Yellow-1
PALECO	97	Yellow-1
<b>Region V</b>		
CANORECO	88	Yellow-1
CASURECO I	100	Yellow-1
CASURECO II	97	Yellow-1
CASURECO III	99	Yellow-2
CASURECO IV	100	Green
ALECO	52	Red
SORECO I	76	Yellow-1
SORECO II	97	Yellow-1
FICELCO	86	Yellow-1
MASELCO	97	Red
TISELCO	38	Yellow-1
<b>Region VI</b>		
AKELCO	90	Yellow-1
ANTECO	96	Yellow-1
CAPELCO	95	Green
ILECO I	95	Green
ILECO II	90	Green
ILECO III	100	Green
GUIMELCO	100	Green
NONECO	94	Yellow-1
CENECO	100	Yellow-1
NOCECO	90	Yellow-1



**Appendix C: Institutional Rating Compliance Table**

<b>Electric Cooperatives</b>	<b>Institutional Rating</b>	<b>Color Classification</b>
<b>Region VII</b>		
NORECO I	86	Green
NORECO II	90	Yellow-1
BANELCO	100	Green
CEBECO I	100	Green
CEBECO II	100	Green
CEBECO III	100	Yellow-1
PROSIELCO	100	Green
CELCO	95	Yellow-1
BOHECO I	99	Green
BOHECO II	100	Yellow-1
<b>Region VIII</b>		
DORELCO	89	Green
LEYECO II	96	Green
LEYECO III	82	Yellow-1
LEYECO IV	100	Green
LEYECO V	85	Yellow-1
SOLECO	90	Green
BILECO	96	Yellow-1
NORSAMELCO	95	Green
SAMELCO I	87	Green
SAMELCO II	90	Yellow-1
ESAMELCO	95	Yellow-1
<b>Region IX</b>		
ZANECO	80	Yellow-1
ZAMSURECO I	100	Yellow-1
ZAMSURECO II	85	Yellow-2
ZAMCELCO	76	Yellow-2
<b>Region X</b>		
MOELCI I	57	Green
MOELCI II	80	Yellow-1
MORESCO I	89	Yellow-1
MORESCO II	87	Yellow-1
FIBECO	77	Yellow-2
BUSECO	100	Green
CAMELCO	87	Yellow-1
LANECO	80	Yellow-1

### Appendix C: Institutional Rating Compliance Table

Electric Cooperatives	Institutional Rating	Color Classification
<b>Region XI</b>		
DORECO	89	Yellow-1
DANECO	90	Yellow-2
DASURECO	90	Yellow-1
<b>Region XII</b>		
COTELCO	100	Yellow-1
COTELCO-PPALMA	67	Yellow-1
SOCOTECO I	97	Green
SOCOTECO II	100	Yellow-1
SUKELCO	96	Yellow-1
<b>ARMM</b>		
TAWELCO	27	Red
SIASELCO	32	Yellow-2
SULECO	62	Red
BASELCO	22	Red
CASELCO	27	Yellow-2
LASURECO	68	Red
MAGELCO	42	Yellow-1
<b>Region XIII</b>		
ANECO	99	Green
ASELCO	78	Yellow-1
SURNECO	100	Green
SIARELCO	100	Green
DIELCO	90	Green
SURSECO I	100	Green
SURSECO II	93	Green

**Appendix D: Energization Level Table**

<b>Electric Cooperatives</b>	<b>Energization Level</b>	<b>Color Classification</b>
<b>Region I</b>		
INEC	100.00	Yellow-1
ISECO	100.00	Green
LUELCO	100.00	Green
PANELCO I	100.00	Yellow-1
CENPELCO	100.00	Yellow-2
PANELCO III	100.00	Green
<b>Region II</b>		
BATANELCO	100.00	Yellow-2
CAGELCO I	100.00	Yellow-1
CAGELCO II	98.71	Yellow-1
ISELCO I	100.00	Yellow-1
ISELCO II	100.00	Yellow-1
NUVELCO	100.00	Yellow-1
QUIRELCO	100.00	Yellow-1
<b>CAR</b>		
ABRECO	100.00	Red
BENECO	97.79	Green
IFELCO	100.00	Yellow-1
KAELCO	91.02	Yellow-1
MOPRECO	100.00	Yellow-1
<b>Region III</b>		
AURELCO	100.00	Yellow-1
TARELCO I	100.00	Yellow-1
TARELCO II	100.00	Green
NEECO I	100.00	Green
NEECO II – AREA 1	100.00	Green
NEECO II – AREA 2	99.89	Yellow-1
SAJELCO	100.00	Yellow-1
PRESCO	100.00	Green
PELCO I	100.00	Yellow-1
PELCO II	100.00	Yellow-1
PELCO III	100.00	Yellow-1
PENELCO	100.00	Yellow-1
ZAMECO I	100.00	Green
ZAMECO II	100.00	Yellow-1

**Appendix D: Energization Level Table**

<b>Electric Cooperatives</b>	<b>Energization Level</b>	<b>Color Classification</b>
<b>Region IV-A</b>		
FLECO	100.00	Yellow-1
BATELEC I	100.00	Yellow-1
BATELEC II	100.00	Green
QUEZELCO I	89.22	Yellow-1
QUEZELCO II	87.27	Green
<b>Region IV-B</b>		
LUBELCO	100.00	Yellow-1
OMECO	86.05	Yellow-1
ORMECO	100.00	Yellow-1
MARELCO	100.00	Yellow-1
TIELCO	100.00	Green
ROMELCO	100.00	Yellow-1
BISELCO	93.40	Yellow-1
PALECO	84.37	Yellow-1
<b>Region V</b>		
CANORECO	100.00	Yellow-1
CASURECO I	100.00	Yellow-1
CASURECO II	100.00	Yellow-1
CASURECO III	99.69	Yellow-2
CASURECO IV	100.00	Green
ALECO	99.12	Red
SORECO I	100.00	Yellow-1
SORECO II	100.00	Yellow-1
FICELCO	100.00	Yellow-1
MASELCO	64.03	Red
TISELCO	89.09	Yellow-1
<b>Region VI</b>		
AKELCO	100.00	Yellow-1
ANTECO	100.00	Yellow-1
CAPELCO	100.00	Green
ILECO I	100.00	Green
ILECO II	91.00	Green
ILECO III	95.35	Green
GUIMELCO	98.13	Green
NONECO	90.42	Yellow-1
CENECO	100.00	Yellow-1
NOCECO	81.36	Yellow-1

**Appendix D: Energization Level Table**

<b>Electric Cooperatives</b>	<b>Energization Level</b>	<b>Color Classification</b>
<b>Region VII</b>		
NORECO I	75.55	Green
NORECO II	100.00	Yellow-1
BANELCO	100.00	Green
CEBECO I	100.00	Green
CEBECO II	100.00	Green
CEBECO III	100.00	Yellow-1
PROSIELCO	100.00	Green
CELCO	100.00	Yellow-1
BOHECO I	100.00	Green
BOHECO II	100.00	Yellow-1
<b>Region VIII</b>		
DORELCO	96.30	Green
LEYECO II	100.00	Green
LEYECO III	100.00	Yellow-1
LEYECO IV	100.00	Green
LEYECO V	96.19	Yellow-1
SOLECO	100.00	Green
BILECO	100.00	Yellow-1
NORSAMELCO	87.72	Green
SAMELCO I	100.00	Green
SAMELCO II	98.48	Yellow-1
ESAMELCO	99.30	Yellow-1
<b>Region IX</b>		
ZANECO	79.86	Yellow-1
ZAMSURECO I	85.25	Yellow-1
ZAMSURECO II	70.69	Yellow-2
ZAMCELCO	79.97	Yellow-2
<b>Region X</b>		
MOELCI I	100.00	Green
MOELCI II	100.00	Yellow-1
MORESCO I	100.00	Yellow-1
MORESCO II	95.17	Yellow-1
FIBECO	95.94	Yellow-2
BUSECO	100.00	Green
CAMELCO	100.00	Yellow-1
LANECO	87.81	Yellow-1

**Appendix D: Energization Level Table**

<b>Electric Cooperatives</b>	<b>Energization Level</b>	<b>Color Classification</b>
<b>Region XI</b>		
DORECO	92.71	Yellow-1
DANECO	74.94	Yellow-2
DASURECO	88.23	Yellow-1
<b>Region XII</b>		
COTELCO	94.22	Yellow-1
COTELCO-PPALMA	62.84	Yellow-1
SOCOTECO I	82.04	Green
SOCOTECO II	86.59	Yellow-1
SUKELCO	93.46	Yellow-1
<b>ARMM</b>		
TAWELCO	21.82	Red
SIASELCO	24.81	Yellow-2
SULECO	26.19	Red
BASELCO	52.03	Red
CASELCO	67.42	Yellow-2
LASURECO	60.49	Red
MAGELCO	63.02	Yellow-1
<b>Region XIII</b>		
ANECO	100.00	Green
ASELCO	100.00	Yellow-1
SURNECO	100.00	Green
SIARELCO	100.00	Green
DIELCO	100.00	Green
SURSECO I	100.00	Green
SURSECO II	100.00	Green

## **Appendix E: Electric Cooperatives List**

### **Region I**

### **Ilocos Region**

INEC	Ilocos Norte Electric Cooperative, Inc.
ISECO	Ilocos Sur Electric Cooperative, Inc.
LUELCO	La Union Electric Cooperative, Inc.
PANELCO I	Pangasinan I Electric Cooperative, Inc.
CENPELCO	Central Pangasinan Electric Cooperative, Inc.
PANELCO III	Pangasinan III Electric Cooperative, Inc.

### **Region II**

### **Cagayan Valley**

BATANELCO	Batanes Electric Cooperative, Inc.
CAGELCO I	Cagayan I Electric Cooperative, Inc.
CAGELCO II	Cagayan II Electric Cooperative, Inc.
ISELCO I	Isabela I Electric Cooperative, Inc.
ISELCO II	Isabela II Electric Cooperative, Inc.
NUVELCO	Nueva Vizcaya Electric Cooperative, Inc.
QUIRELCO	Quirino Electric Cooperative, Inc.

### **CAR**

### **Cordillera Administrative Region**

ABRECO	Abra Electric Cooperative, Inc.
BENECO	Benguet Electric Cooperative, Inc.
IFELCO	Ifugao Electric Cooperative, Inc.
KAELCO	Kalinga-Apayao Electric Cooperative, Inc.
MOPRECO	Mountain Province Electric Cooperative, Inc.

### **Region III**

### **Central Luzon**

AURELCO	Aurora Electric Cooperative, Inc.
TARELCO I	Tarlac I Electric Cooperative, Inc.
TARELCO II	Tarlac II Electric Cooperative, Inc.
NEECO I	Nueva Ecija I Electric Cooperative, Inc.
NEECO II - Area 1	Nueva Ecija II Electric Cooperative, Inc. - Area 1
NEECO II - Area 2	Nueva Ecija II Electric Cooperative, Inc. - Area 2
SAJELCO	San Jose City Electric Cooperative, Inc.
PRESCO	Pampanga Rural Electric Service Coop., Inc.
PELCO I	Pampanga I Electric Cooperative, Inc.
PELCO II	Pampanga II Electric Cooperative, Inc.
PELCO III	Pampanga III Electric Cooperative, Inc.
PENELCO	Peninsula (Bataan) Electric Cooperative, Inc.
ZAMECO I	Zambales I Electric Cooperative, Inc.
ZAMECO II	Zambales II Electric Cooperative, Inc.

## **Appendix E: Electric Cooperatives List**

### **Region IV-A**

### **CALABARZON**

FLECO	First Laguna Electric Cooperative, Inc.
BATELEC I	Batangas I Mindoro Electric Cooperative, Inc.
BATELEC II	Batangas II Electric Cooperative, Inc.
QUEZELCO I	Quezon I Electric Cooperative, Inc.
QUEZELCO II	Quezon II Electric Cooperative, Inc.

### **Region IV-B**

### **MIMAROPA**

LUBELCO	Lubang Electric Cooperative, Inc.
OMECCO	Occidental Mindoro Electric Cooperative, Inc.
ORMECO	Oriental Mindoro Electric Cooperative, Inc.
MARELCO	Marinduque Electric Cooperative, Inc.
TIELCO	Tablas Island Electric Cooperative, Inc.
ROMELCO	Romblon Electric Cooperative, Inc.
BISELCO	Busuanga Island Electric Cooperative, Inc.
PALECO	Palawan Electric Cooperative, Inc.

### **Region V**

### **Bicol Region**

CANORECO	Camarines Norte Electric Cooperative, Inc.
CASURECO I	Camarines Sur I Electric Cooperative, Inc.
CASURECO II	Camarines Sur II Electric Cooperative, Inc.
CASURECO III	Camarines Sur III Electric Cooperative, Inc.
CASURECO IV	Camarines Sur IV Electric Cooperative, Inc.
ALECO	Albay Electric Cooperative, Inc.
SORECO I	Sorsogon I Electric Cooperative, Inc.
SORECO II	Sorsogon II Electric Cooperative, Inc.
FICELCO	First Catanduanes Electric Cooperative, Inc.
MASELCO	Masbate Electric Cooperative, Inc.
TISELCO	Ticao Island Electric Cooperative, Inc.

### **Region VI**

### **Western Visayas**

AKELCO	Aklan Electric Cooperative, Inc.
ANTECO	Antique Electric Cooperative, Inc.
CAPELCO	Capiz Electric Cooperative, Inc.
ILECO I	Iloilo I Electric Cooperative, Inc.
ILECO II	Iloilo II Electric Cooperative, Inc.
ILECO III	Iloilo III Electric Cooperative, Inc.
GUIMELCO	Guimaras Electric Cooperative, Inc.
NONECO	Northern Negros Electric Cooperative, Inc.
CENECO	Central Negros Electric Cooperative, Inc.
NOCECO	Negros Occidental Electric Cooperative, Inc.



## **Appendix E: Electric Cooperatives List**

### **Region VII**

#### **Central Visayas**

NORECO I	Negros Oriental I Electric Cooperative, Inc.
NORECO II	Negros Oriental II Electric Cooperative, Inc.
BANELCO	Bantayan Island Electric Cooperative, Inc.
CEBECO I	Cebu I Electric Cooperative, Inc.
CEBECO II	Cebu II Electric Cooperative, Inc.
CEBECO III	Cebu III Electric Cooperative, Inc.
PROSIELCO	Province of Siquijor Electric Cooperative, Inc.
CELCO	Camotes Electric Cooperative, Inc.
BOHECO I	Bohol I Electric Cooperative, Inc.
BOHECO II	Bohol II Electric Cooperative, Inc.

### **Region VIII**

#### **Eastern Visayas**

DORELCO	Don Orestes Romualdez Electric Cooperative, Inc.
LEYECO II	Leyte II Electric Cooperative, Inc.
LEYECO III	Leyte III Electric Cooperative, Inc.
LEYECO IV	Leyte IV Electric Cooperative, Inc.
LEYECO V	Leyte V Electric Cooperative, Inc.
SOLECO	Southern Leyte Electric Cooperative, Inc.
BILECO	Biliran Electric Cooperative, Inc.
NORSAMELCO	Northern Samar Electric Cooperative, Inc.
SAMELCO I	Samar I Electric Cooperative, Inc.
SAMELCO II	Samar II Electric Cooperative, Inc.
ESAMELCO	Eastern Samar Electric Cooperative, Inc.

### **Region IX**

#### **Zamboanga Peninsula**

ZANECO	Zamboanga del Norte Electric Cooperative, Inc.
ZAMSURECO I	Zamboanga del Sur I Electric Cooperative, Inc.
ZAMSURECO II	Zamboanga del Sur II Electric Cooperative, Inc.
ZAMCELCO	Zamboanga City Electric Cooperative, Inc.

### **Region X**

#### **Northern Mindanao**

MOELCI I	Misamis Occidental I Electric Cooperative, Inc.
MOELCI II	Misamis Occidental II Electric Cooperative, Inc.
MORESCO I	Misamis Oriental I Electric Cooperative, Inc.
MORESCO II	Misamis Oriental II Electric Cooperative, Inc.
FIBECO	First Bukidnon Electric Cooperative, Inc.
BUSECO	Bukidnon II Electric Cooperative, Inc.
CAMELCO	Camiguin Electric Cooperative, Inc.
LANECO	Lanao del Norte Electric Cooperative, Inc.

## **Appendix E: Electric Cooperatives List**

### **Region XI**

### **Davao Region**

DORECO	Davao Oriental Electric Cooperative, Inc.
DANECO	Davao del Norte Electric Cooperative, Inc.
DASURECO	Davao del Sur Electric Cooperative, Inc.

### **Region XII**

### **SOCCKSARGEN**

COTELCO	North Cotabato Electric Cooperative, Inc.
COTELCO-PPALMA	North Cotabato Electric Cooperative, Inc. - PPALMA
SOCOTECO I	South Cotabato I Electric Cooperative, Inc.
SOCOTECO II	South Cotabato II Electric Cooperative, Inc.
SUKELCO	Sultan Kudarat Electric Cooperative, Inc.

### **ARMM**

### **Autonomous Region in Muslim Mindanao**

TAWELCO	Tawi-Tawi Electric Cooperative, Inc.
SIASELCO	Siasi Electric Cooperative, Inc.
SULECO	Sulu Electric Cooperative, Inc.
BASELCO	Basilan Electric Cooperative, Inc.
CASELCO	Cagayan de Sulu Electric Cooperative, Inc.
LASURECO	Lanao del Sur Electric Cooperative, Inc.
MAGELCO	Maguindanao Electric Cooperative, Inc.

### **Region XIII**

### **Caraga Administrative Region**

ANECO	Agusan del Norte Electric Cooperative, Inc.
ASELCO	Agusan del Sur Electric Cooperative, Inc.
SURNECO	Surigao del Norte Electric Cooperative, Inc.
SIARELCO	Siargao Electric Cooperative, Inc.
DIELCO	Dinagat Island Electric Cooperative, Inc.
SURSECO I	Surigao del Sur I Electric Cooperative, Inc.
SURSECO II	Surigao del Sur II Electric Cooperative, Inc.